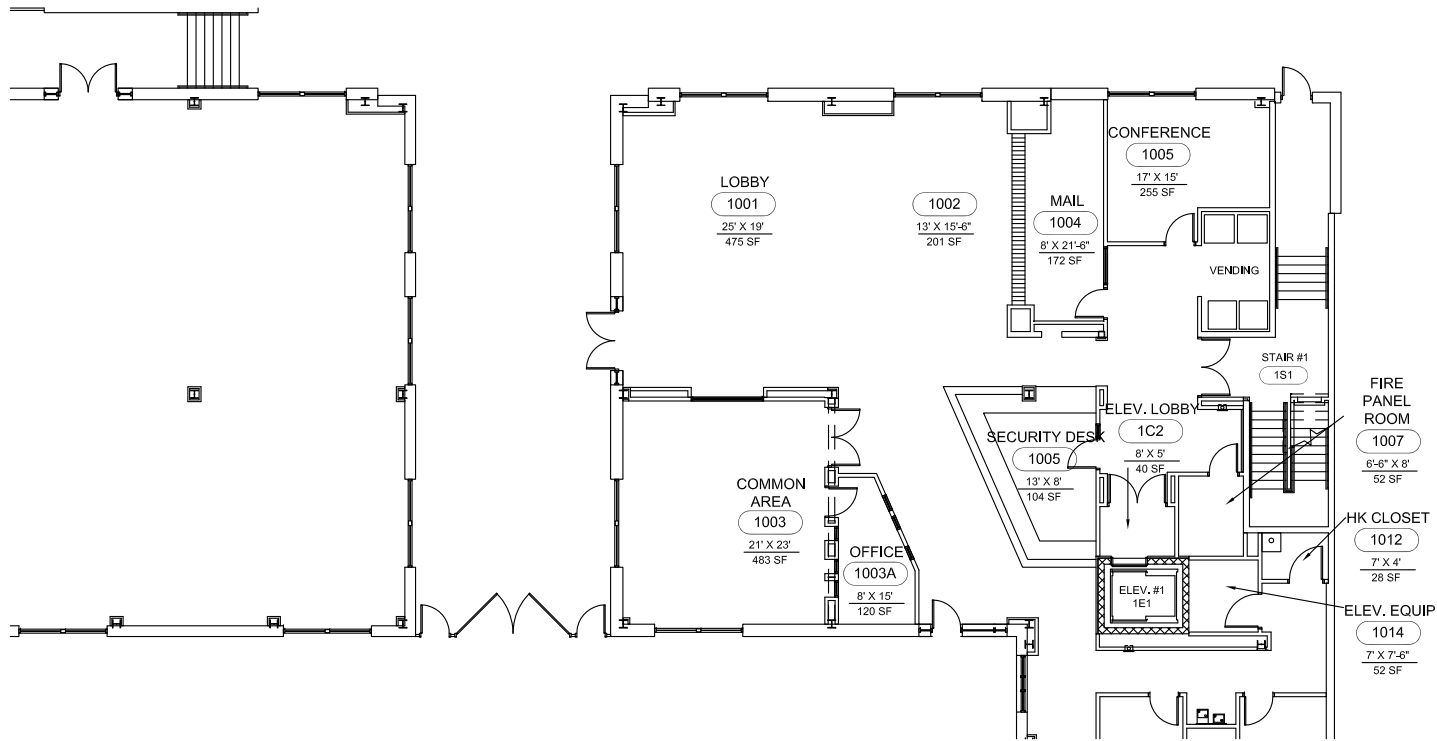


KEY PLAN FIRST FLOOR



AREA B - FIRST FLOOR  
NOT TO SCALE

VCU Facilities Management

700 West Grace Street  
Richmond, Va 23284

Phone: 804-828-7006  
Fax: 804-828-6617

<http://www.vcu.edu/fmd/>



Not Plotted to Scale

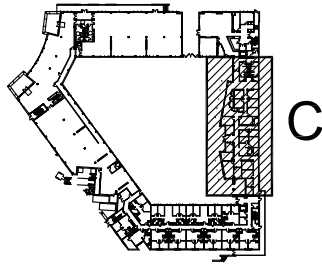
Created By:	Date:
KSA	1/2011

Revised By:	Date:

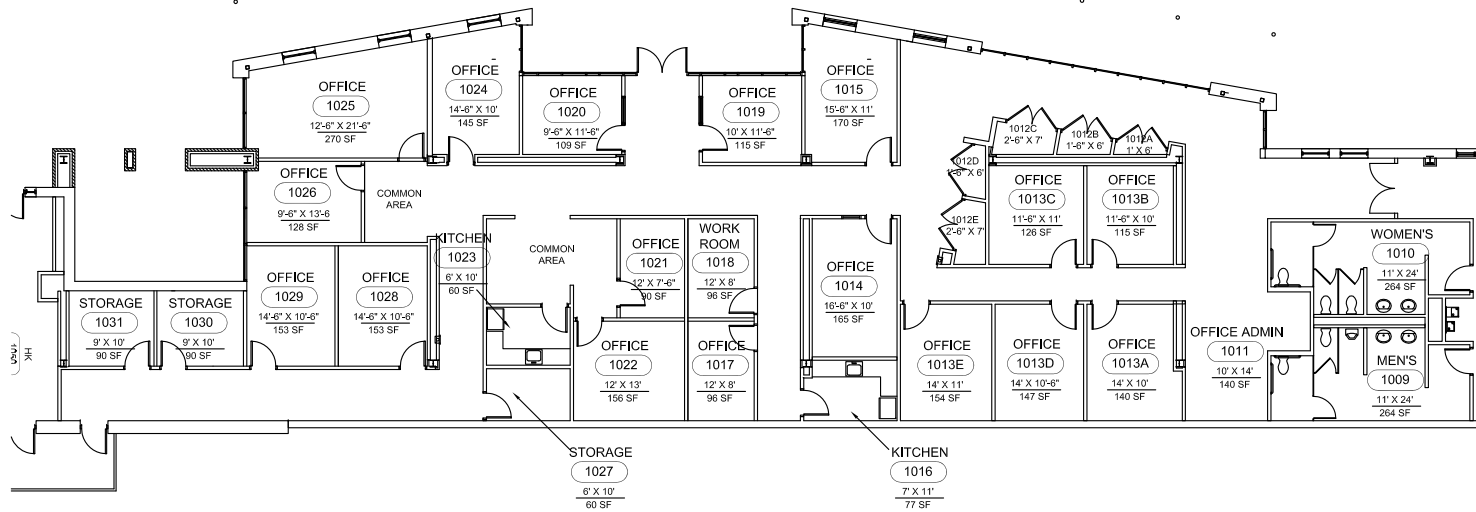
Building Number:	254
------------------	-----

Building Name:	BELVIDERE & CARY ST DORM FACILITY
----------------	-----------------------------------

Floor Number:	01
---------------	----



KEY PLAN FIRST FLOOR



AREA C - FIRST FLOOR  
NOT TO SCALE

VCU Facilities Management

700 West Grace Street  
Richmond, Va 23284

Phone: 804-828-7006  
Fax: 804-828-6617

<http://www.vcu.edu/fmd/>



Not Plotted to Scale

Created By:	Date:
KSA	1/2011

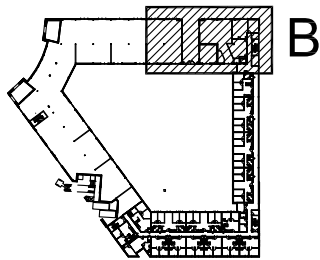
Revised By:	Date:

Building Number:	254
------------------	-----

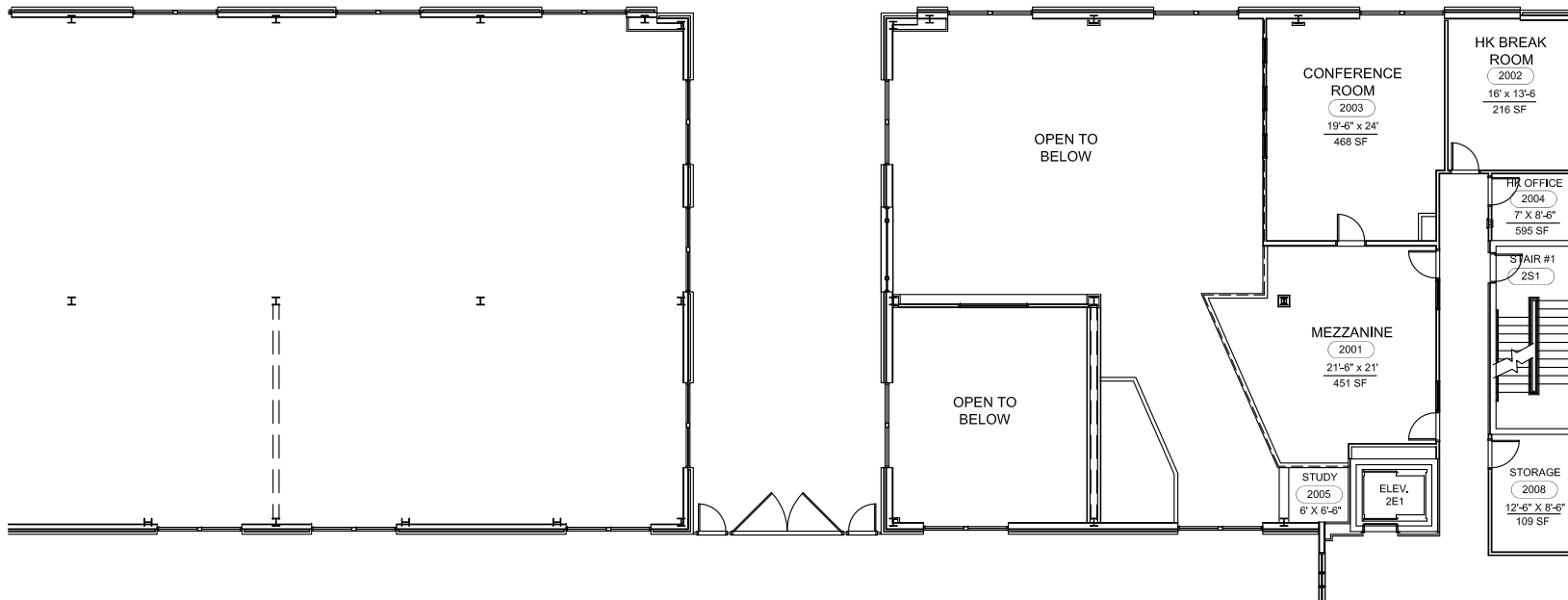
Building Name:	BELVIDERE & CARY ST DORM FACILITY
----------------	-----------------------------------

Floor Number:	01
---------------	----





KEY PLAN SECOND FLOOR



AREA B - SECOND FLOOR

NOT TO SCALE

VCU Facilities Management

700 West Grace Street  
Richmond, Va 23284

Phone: 804-828-7006  
Fax: 804-828-6617

<http://www.vcu.edu/fmd/>



Not Plotted to Scale

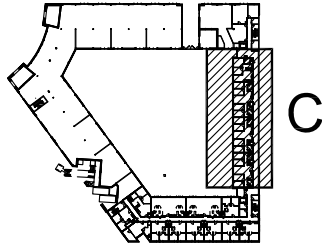
Created By:	Date:
KSA	1/2011

Revised By:	Date:

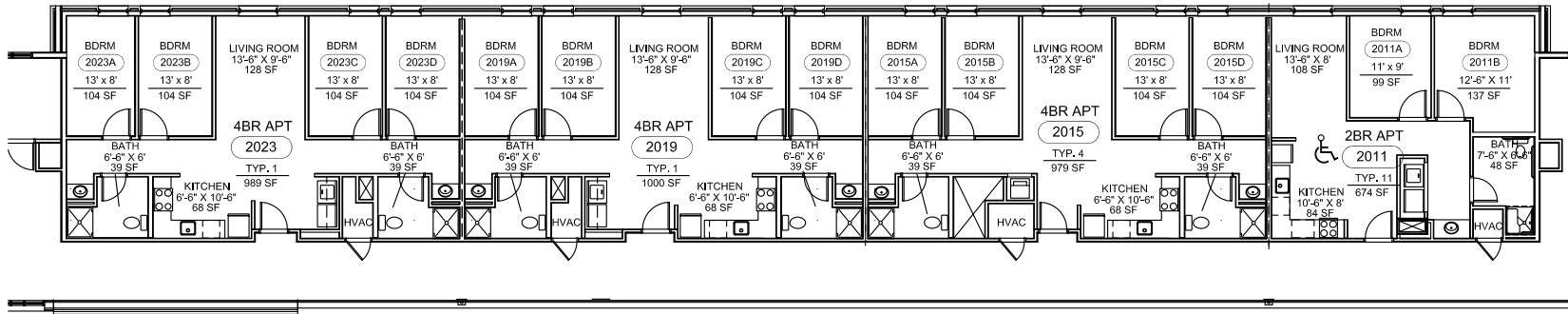
Building Number:	254
------------------	-----

Building Name:	BELVIDERE & CARY ST DORM FACILITY
----------------	--------------------------------------

Floor Number:	02
---------------	----



KEY PLAN SECOND FLOOR



AREA C - SECOND FLOOR  
NOT TO SCALE

VCU Facilities Management

700 West Grace Street  
Richmond, Va 23284

Phone: 804-828-7006  
Fax: 804-828-6617

<http://www.vcu.edu/fmd/>



Not Plotted to Scale

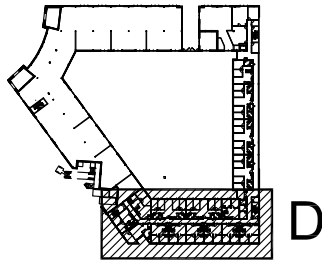
Created By:	Date:
KSA	1/2011

Revised By:	Date:

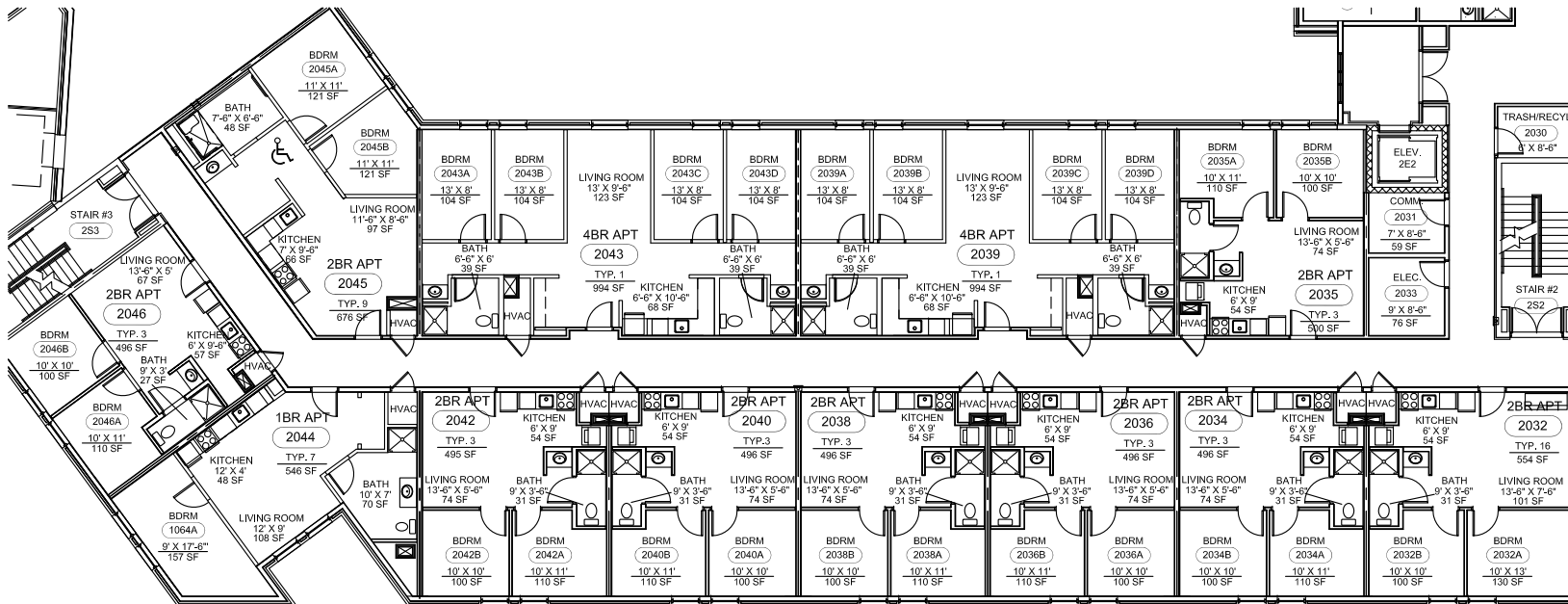
Building Number:	254
------------------	-----

Building Name:	BELVIDERE & CARY ST DORM FACILITY
----------------	-----------------------------------

Floor Number:	02
---------------	----



KEY PLAN SECOND FLOOR



AREA D - SECOND FLOOR  
NOT TO SCALE

VCU Facilities Management

700 West Grace Street  
Richmond, Va 23284

Phone: 804-828-7006  
Fax: 804-828-6617

<http://www.vcu.edu/fmd/>



Not Plotted to Scale

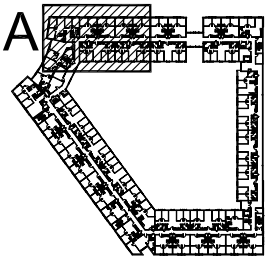
Created By:	Date:
KSA	1/2011

Revised By:	Date:

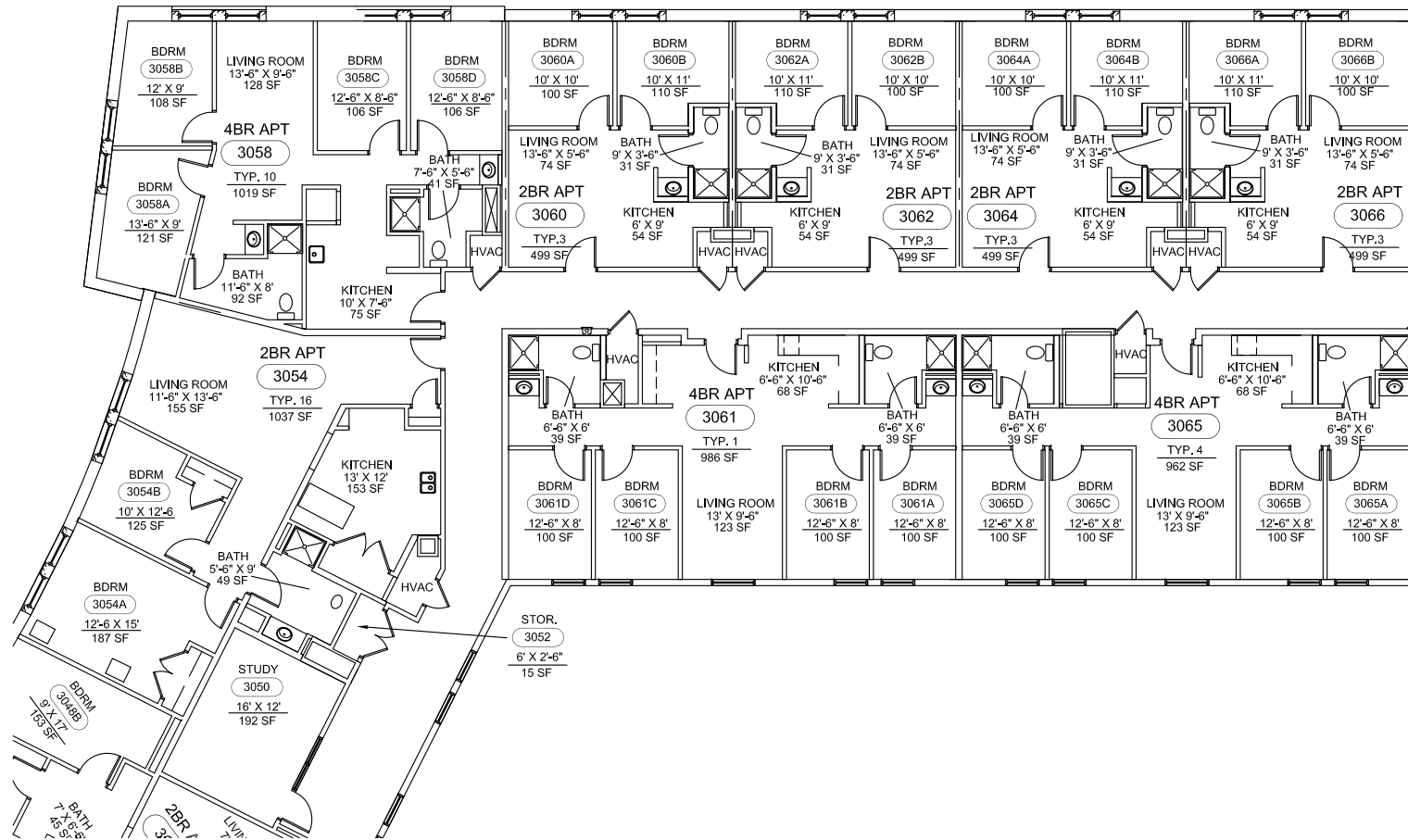
Building Number:	254
------------------	-----

Building Name:	BELVIDERE & CARY ST DORM FACILITY
----------------	-----------------------------------

Floor Number:	02
---------------	----



KEY PLAN THIRD FLOOR



AREA A - THIRD FLOOR  
NOT TO SCALE

VCU Facilities Management

700 West Grace Street  
Richmond, Va 23284

Phone: 804-828-7006  
Fax: 804-828-6617

<http://www.vcu.edu/fmd/>



Not Plotted to Scale

Created By:	Date:
KSA	1/2011

Revised By:	Date:

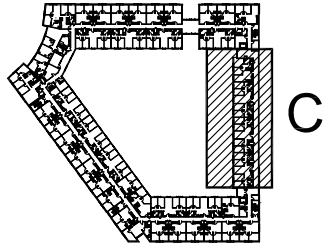
Building Number:	254
------------------	-----

Building Name:	BELVIDERE & CARY ST DORM FACILITY
----------------	-----------------------------------

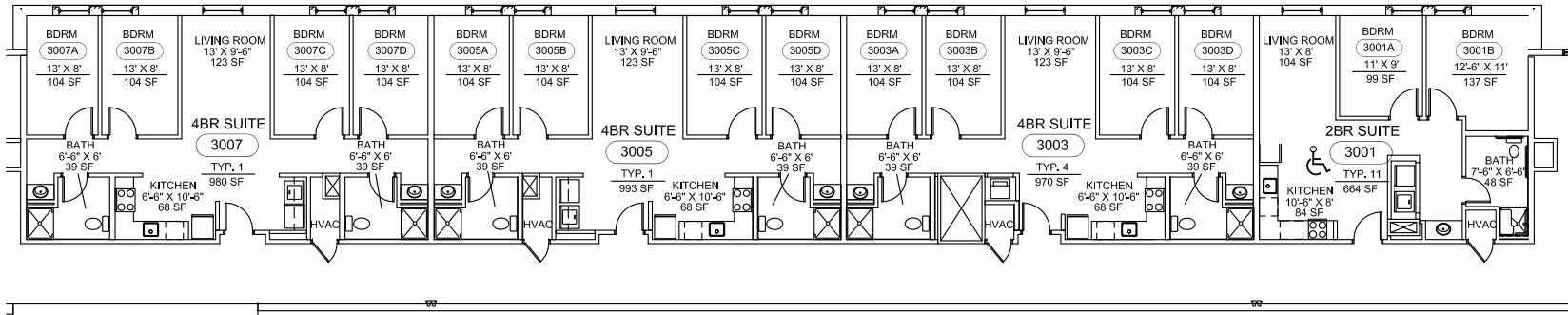
Floor Number:	03
---------------	----







KEY PLAN THIRD FLOOR



AREA C - THIRD FLOOR  
NOT TO SCALE

VCU Facilities Management

700 West Grace Street  
Richmond, Va 23284

Phone: 804-828-7006  
Fax: 804-828-6617

<http://www.vcu.edu/fmd/>



Not Plotted to Scale

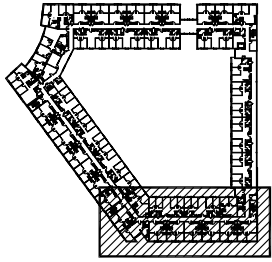
Created By:	Date:
KSA	1/2011

Revised By:	Date:

Building Number:	254
------------------	-----

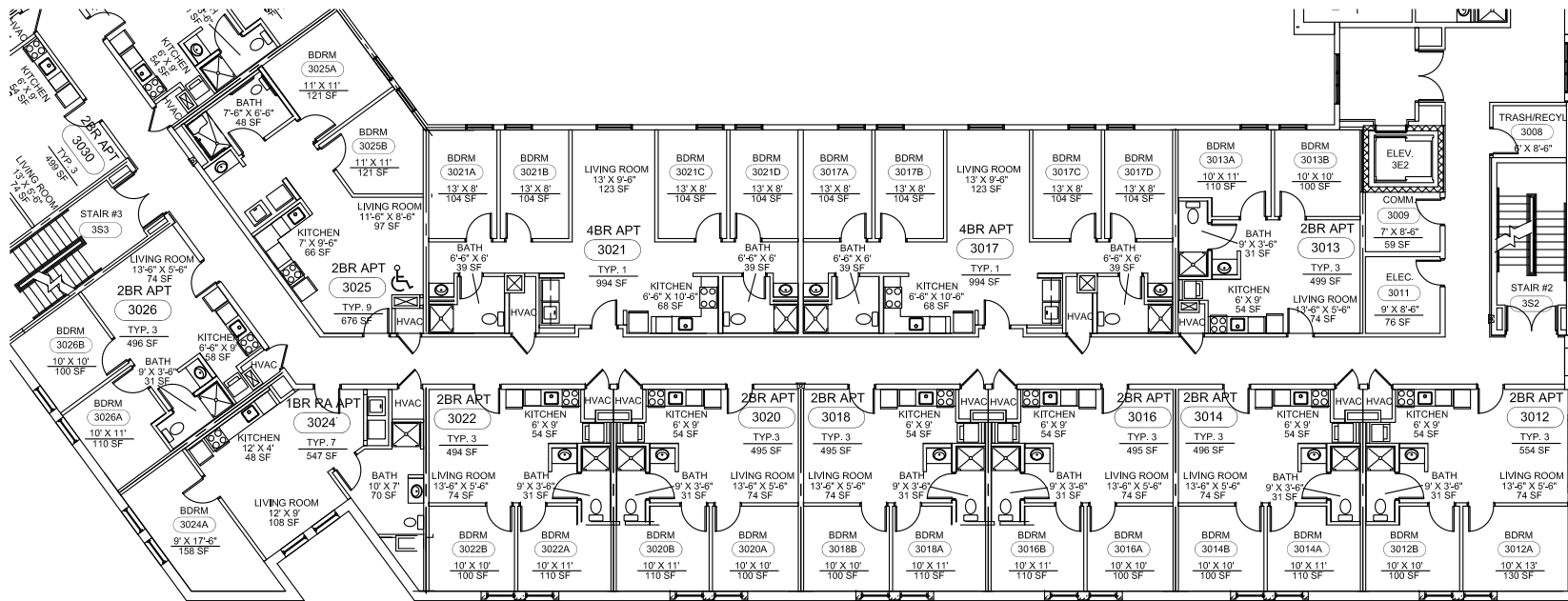
Building Name:  
BELVIDERE & CARY ST  
DORM FACILITY

Floor Number:	03
---------------	----



D

KEY PLAN THIRD FLOOR



AREA D - THIRD FLOOR  
NOT TO SCALE

VCU Facilities Management

700 West Grace Street  
Richmond, Va 23284

Phone: 804-828-7006  
Fax: 804-828-6617

<http://www.vcu.edu/fmd/>



Not Plotted to Scale

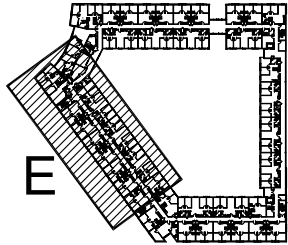
Created By:	Date:
KSA	1/2011

Revised By:	Date:

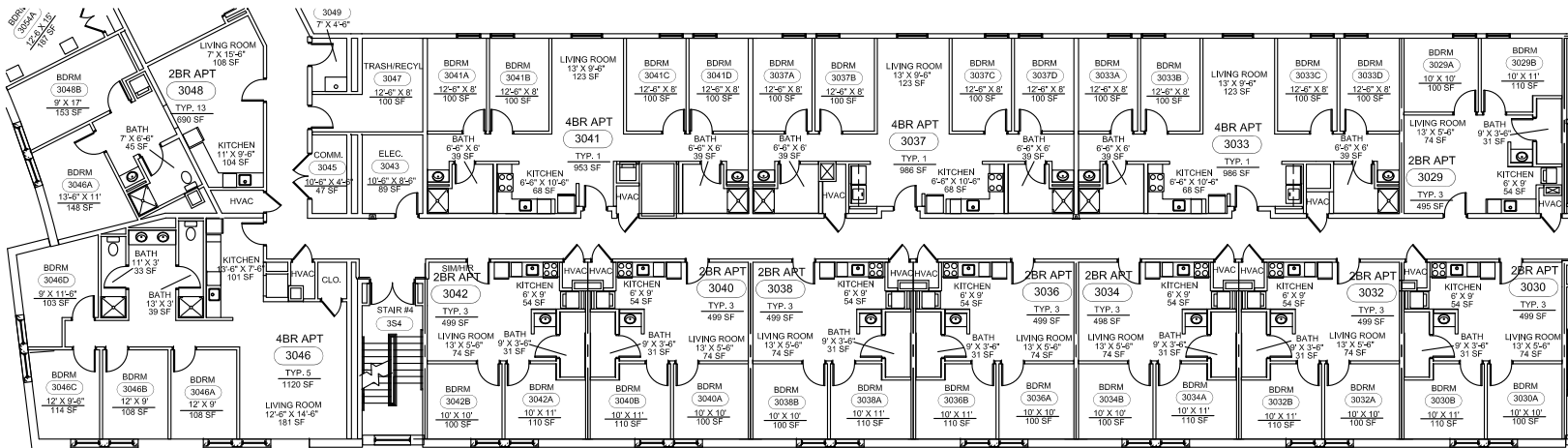
Building Number:	254
------------------	-----

Building Name:	BELVIDERE & CARY ST DORM FACILITY
----------------	-----------------------------------

Floor Number:	03
---------------	----



KEY PLAN THIRD FLOOR



**AREA E - THIRD FLOOR**  
NOT TO SCALE

VCU Facilities Management

700 West Grace Street  
Richmond, Va 23284

Phone: 804-828-7006  
Fax: 804-828-6617

<http://www.vcu.edu/fmd/>



Not Plotted to Scale

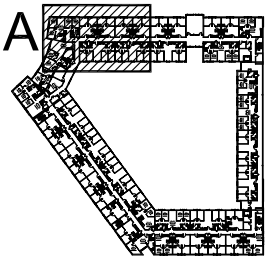
Created By:	Date:
KSA	1/2011

Revised By:	Date:

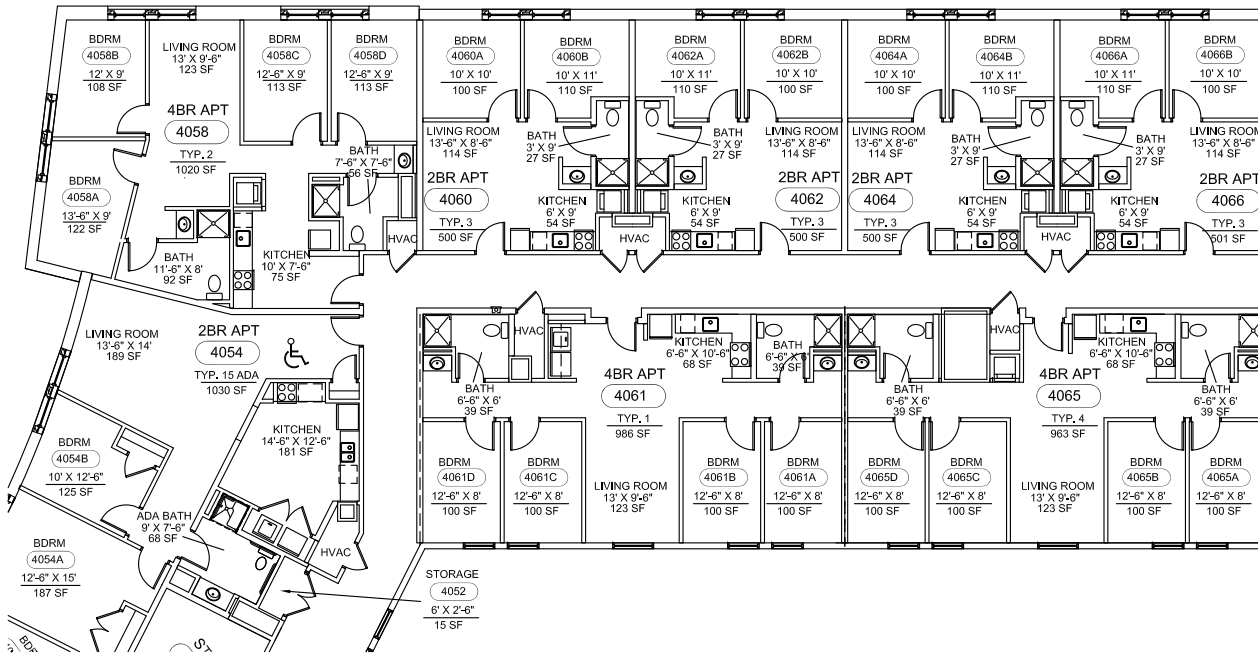
Building Number:	254
------------------	-----

Building Name:  
BELVIDERE & CARY ST  
DORM FACILITY

Floor Number:	03
---------------	----



**KEY PLAN FOURTH FLOOR**



**AREA A - FOURTH FLOOR**  
NOT TO SCALE

VCU Facilities Management

700 West Grace Street  
Richmond, Va 23284

Phone: 804-828-7006  
Fax: 804-828-6617

<http://www.vcu.edu/fmd/>



Not Plotted to Scale

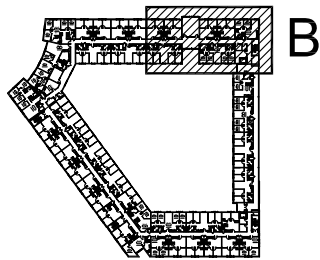
Created By:	Date:
KSA	1/2011

Revised By:	Date:

Building Number:	254
------------------	-----

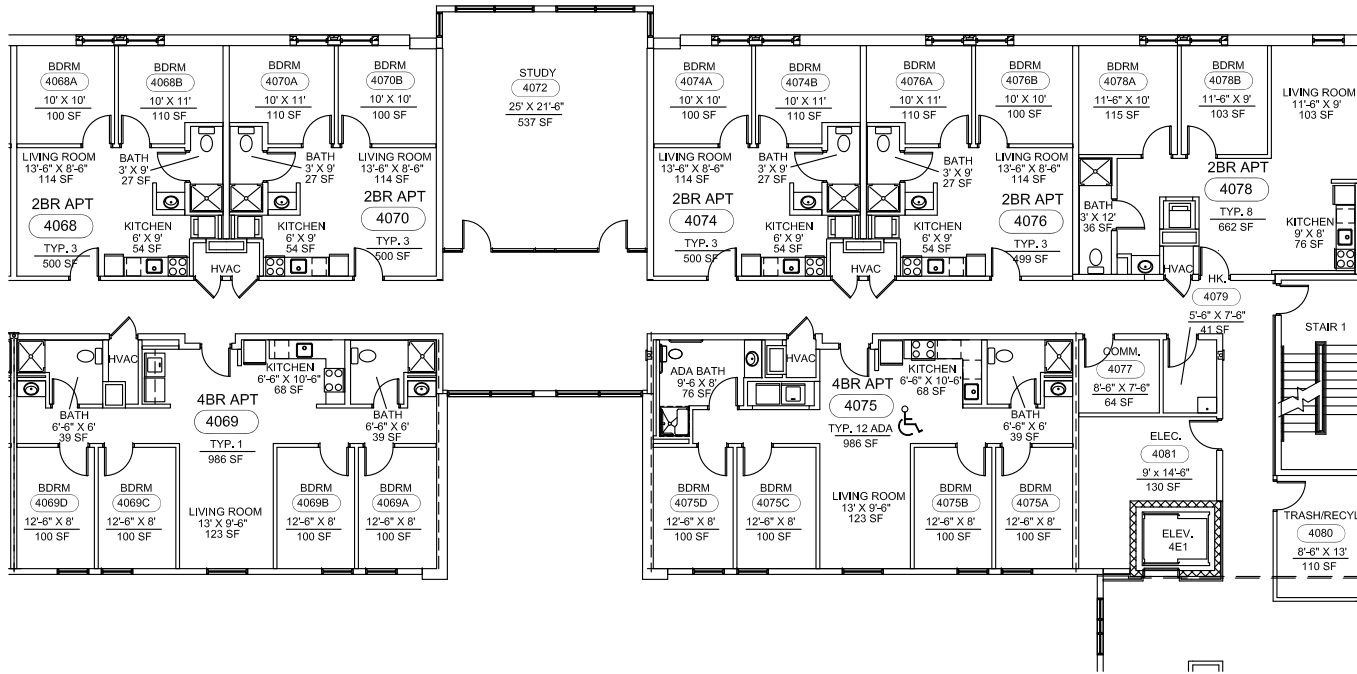
Building Name:	BELVIDERE & CARY ST DORM FACILITY
----------------	-----------------------------------

Floor Number:	04
---------------	----



B

KEY PLAN FOURTH FLOOR



AREA B - FOURTH FLOOR

NOT TO SCALE

VCU Facilities Management

700 West Grace Street  
Richmond, Va 23284

Phone: 804-828-7006  
Fax: 804-828-6617

<http://www.vcu.edu/fmd/>



Not Plotted to Scale

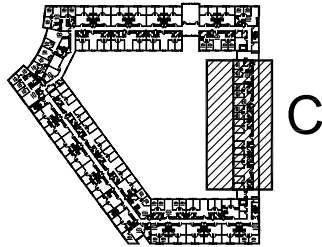
Created By:	Date:
KSA	1/2011

Revised By:	Date:

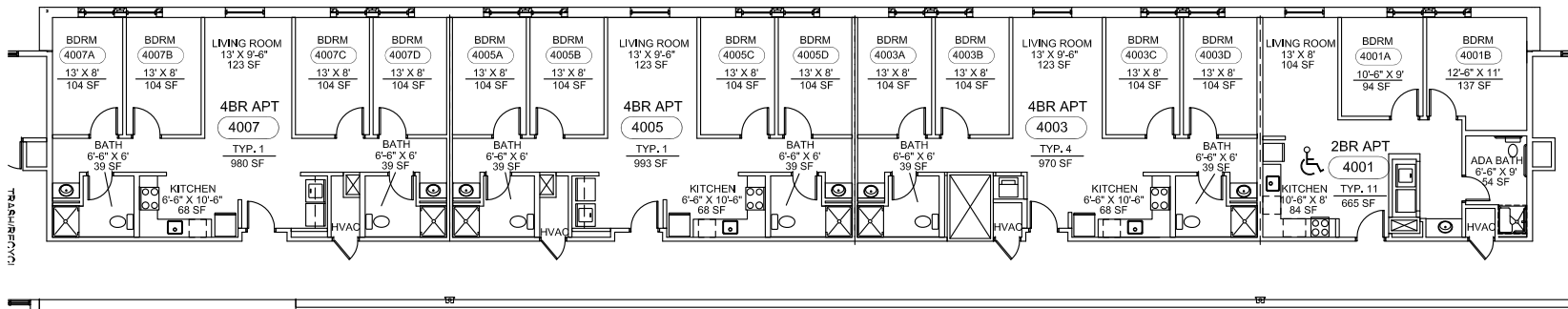
Building Number:	254
------------------	-----

Building Name:	BELVIDERE & CARY ST DORM FACILITY
----------------	-----------------------------------

Floor Number:	04
---------------	----



KEY PLAN FOURTH FLOOR



AREA C - FOURTH FLOOR  
NOT TO SCALE

VCU Facilities Management

700 West Grace Street  
Richmond, Va 23284

Phone: 804-828-7006  
Fax: 804-828-6617

<http://www.vcu.edu/fmd/>



Not Plotted to Scale

Created By:	Date:
KSA	1/2011

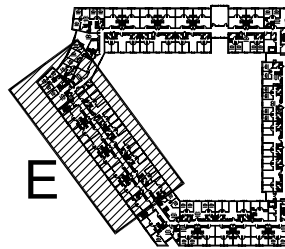
Revised By:	Date:

Building Number:	254
------------------	-----

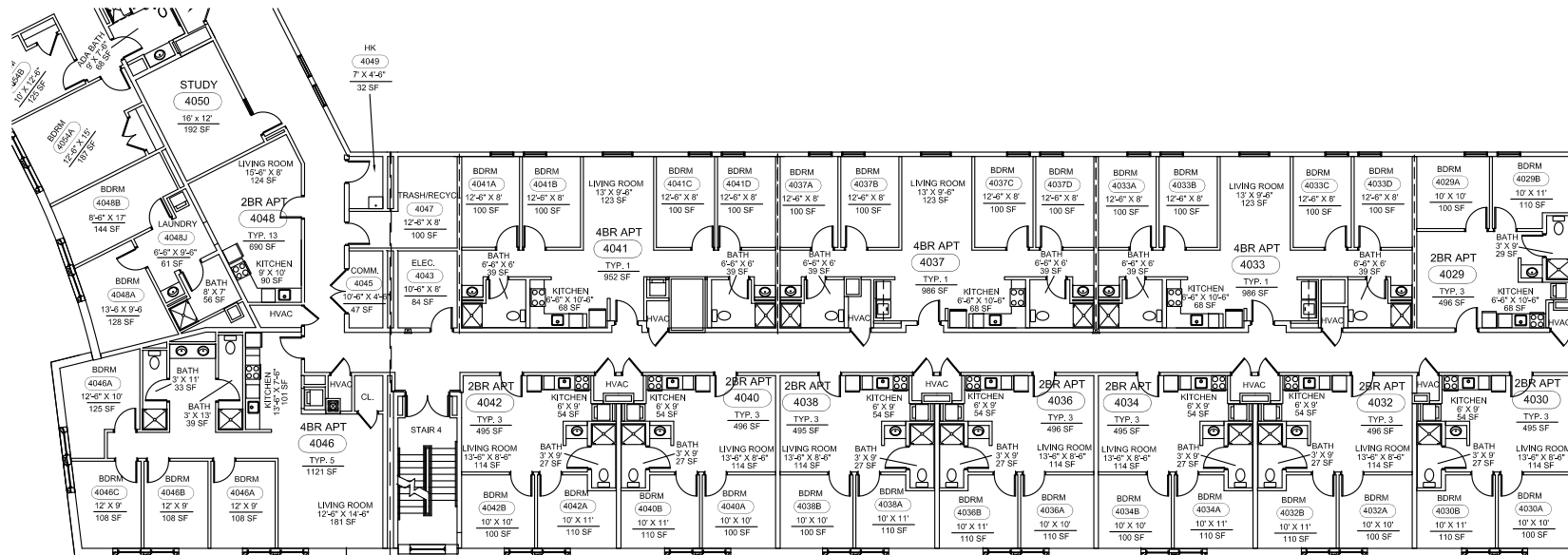
Building Name:	BELVIDERE & CARY ST DORM FACILITY
----------------	-----------------------------------

Floor Number:	04
---------------	----





**KEY PLAN FOURTH FLOOR**



Not Plotted to Scale

Created By: Date:

KSA 1/2011

Revised By: Date:

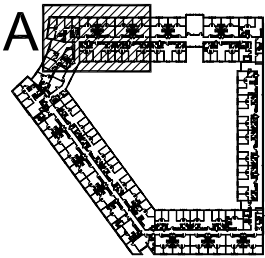
Building Number: 254

Building Name:  
BELVIDERE & CARY ST  
DORM FACILITY

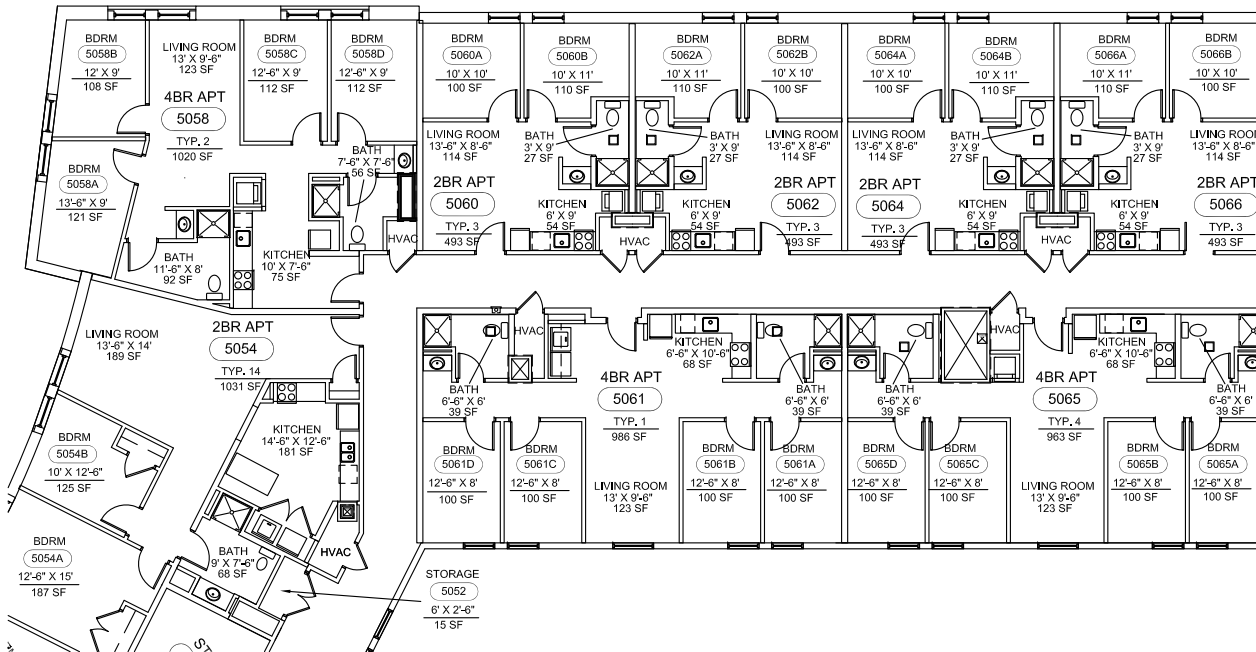
Floor Number:  
04

**AREA E - FOURTH FLOOR**  
NOT TO SCALE





**KEY PLAN FIFTH FLOOR**



**AREA A - FIFTH FLOOR**  
NOT TO SCALE

VCU Facilities Management

700 West Grace Street  
Richmond, Va 23284

Phone: 804-828-7006  
Fax: 804-828-6617

<http://www.vcu.edu/fmd/>



Not Plotted to Scale

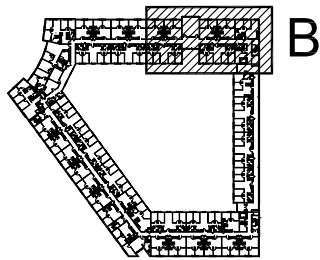
Created By:	Date:
KSA	1/2011

Revised By:	Date:

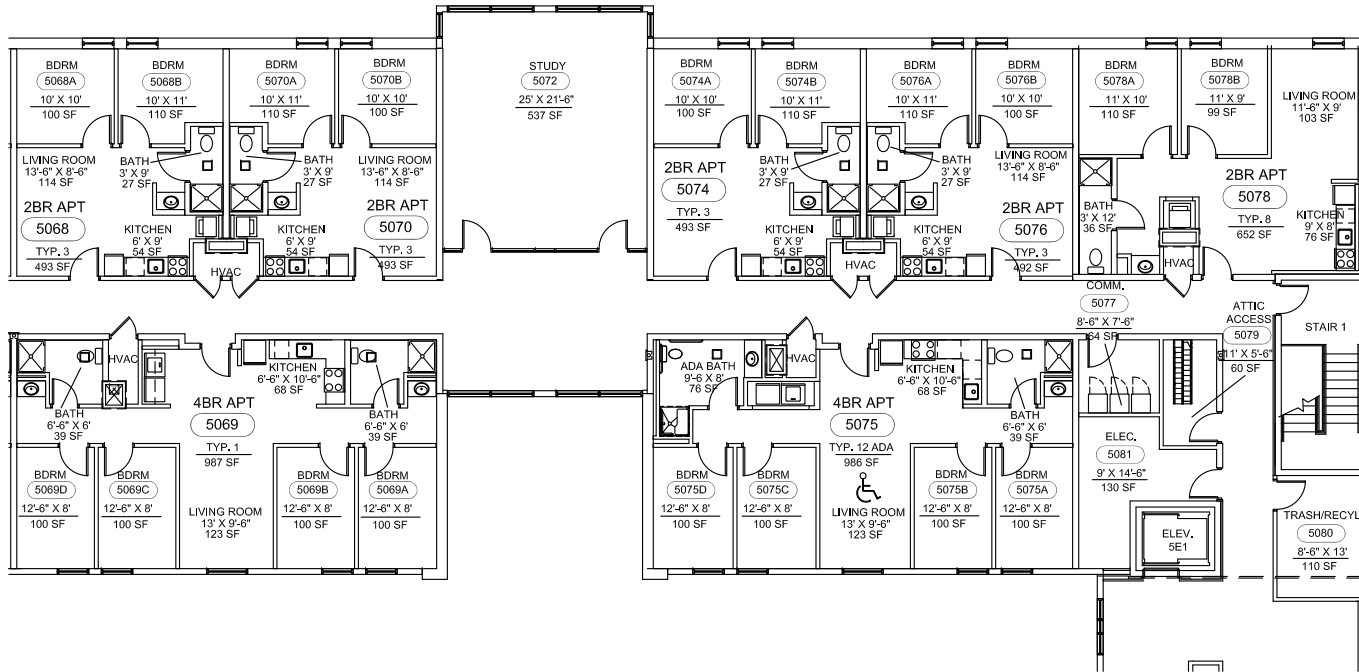
Building Number:	254
------------------	-----

Building Name:	BELVIDERE & CARY ST DORM FACILITY
----------------	-----------------------------------

Floor Number:	05
---------------	----



**KEY PLAN FIFTH FLOOR**



**AREA B - FIFTH FLOOR**  
NOT TO SCALE

VCU Facilities Management

700 West Grace Street  
Richmond, Va 23284

Phone: 804-828-7006  
Fax: 804-828-6617

<http://www.vcu.edu/fmd/>



Not Plotted to Scale

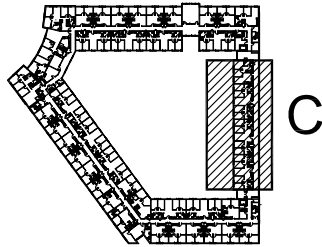
Created By:	Date:
KSA	1/2011

Revised By:	Date:

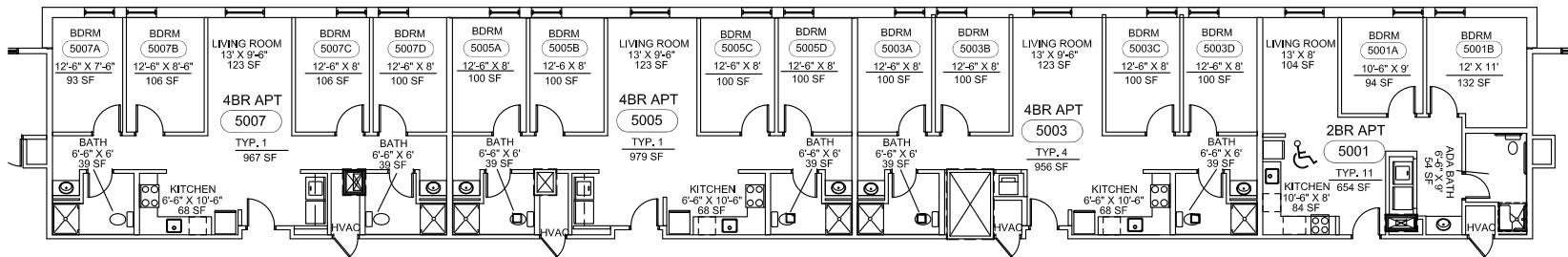
Building Number:	254
------------------	-----

Building Name:	BELVIDERE & CARY ST DORM FACILITY
----------------	-----------------------------------

Floor Number:	05
---------------	----



**KEY PLAN FIFTH FLOOR**



**AREA C - FIFTH FLOOR**  
NOT TO SCALE

VCU Facilities Management

700 West Grace Street  
Richmond, Va 23284

Phone: 804-828-7006  
Fax: 804-828-6617

<http://www.vcu.edu/fmd/>



Not Plotted to Scale

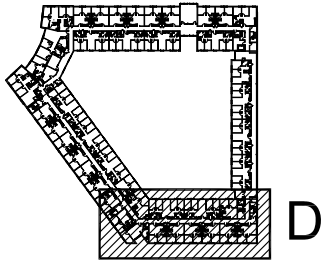
Created By:	Date:
KSA	1/2011

Revised By:	Date:

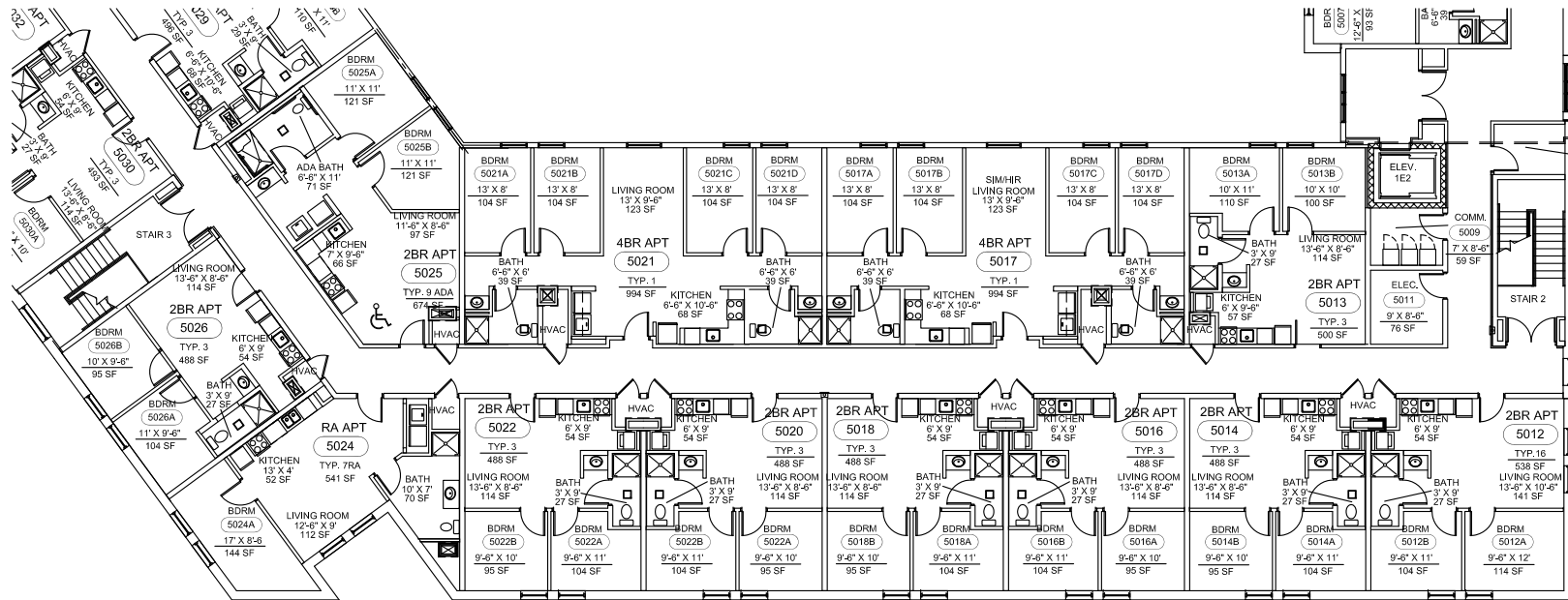
Building Number:	254
------------------	-----

Building Name:  
**BELVIDERE & CARY ST  
DORM FACILITY**

Floor Number:	05
---------------	----



KEY PLAN FIFTH FLOOR



AREA D - FIFTH FLOOR  
NOT TO SCALE

VCU Facilities Management  
  
700 West Grace Street  
Richmond, Va 23284  
  
Phone: 804-828-7006  
Fax: 804-828-6617

<http://www.vcu.edu/fmd/>



Not Plotted to Scale

Created By:	Date:
KSA	1/2011
Revised By:	Date:
Building Number:	254
Building Name:	BELVIDERE & CARY ST DORM FACILITY
Floor Number:	05



Not Plotted to Scale

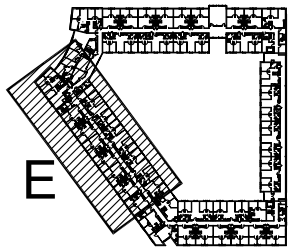
Created By:	Date:
KSA	1/2011

Revised By:	Date:

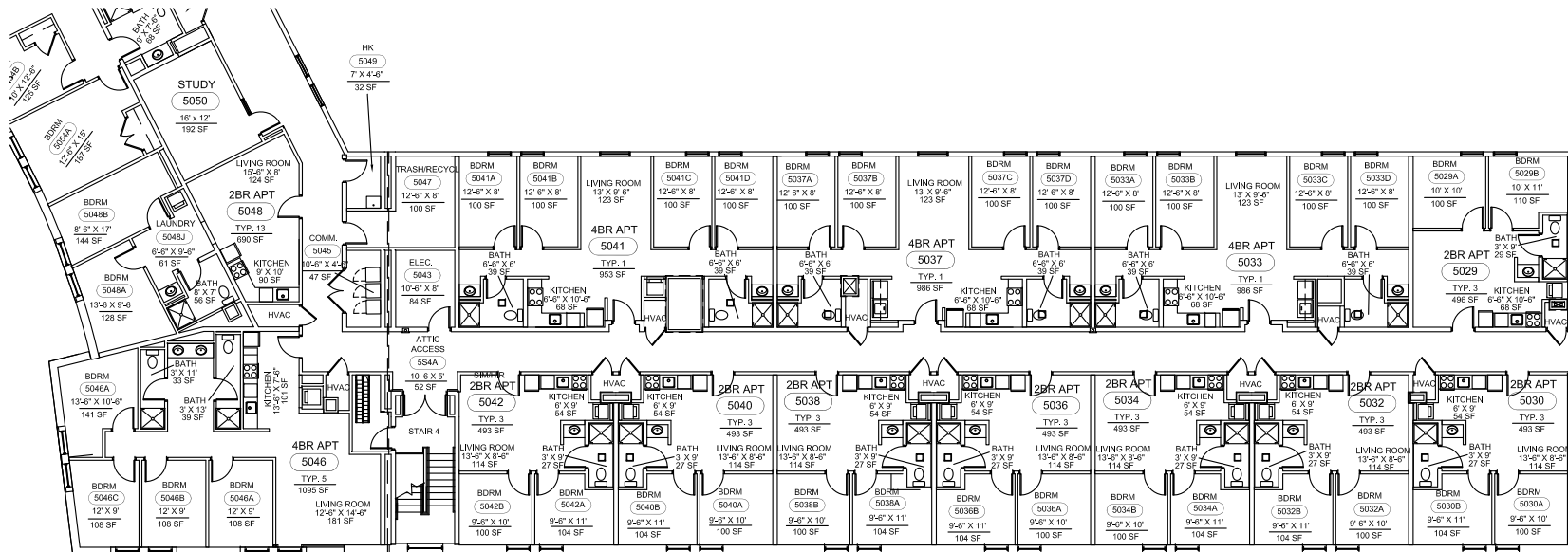
Building Number:	254
------------------	-----

Building Name:	BELVIDERE & CARY ST DORM FACILITY
----------------	-----------------------------------

Floor Number:	05
---------------	----



**KEY PLAN FIFTH FLOOR**



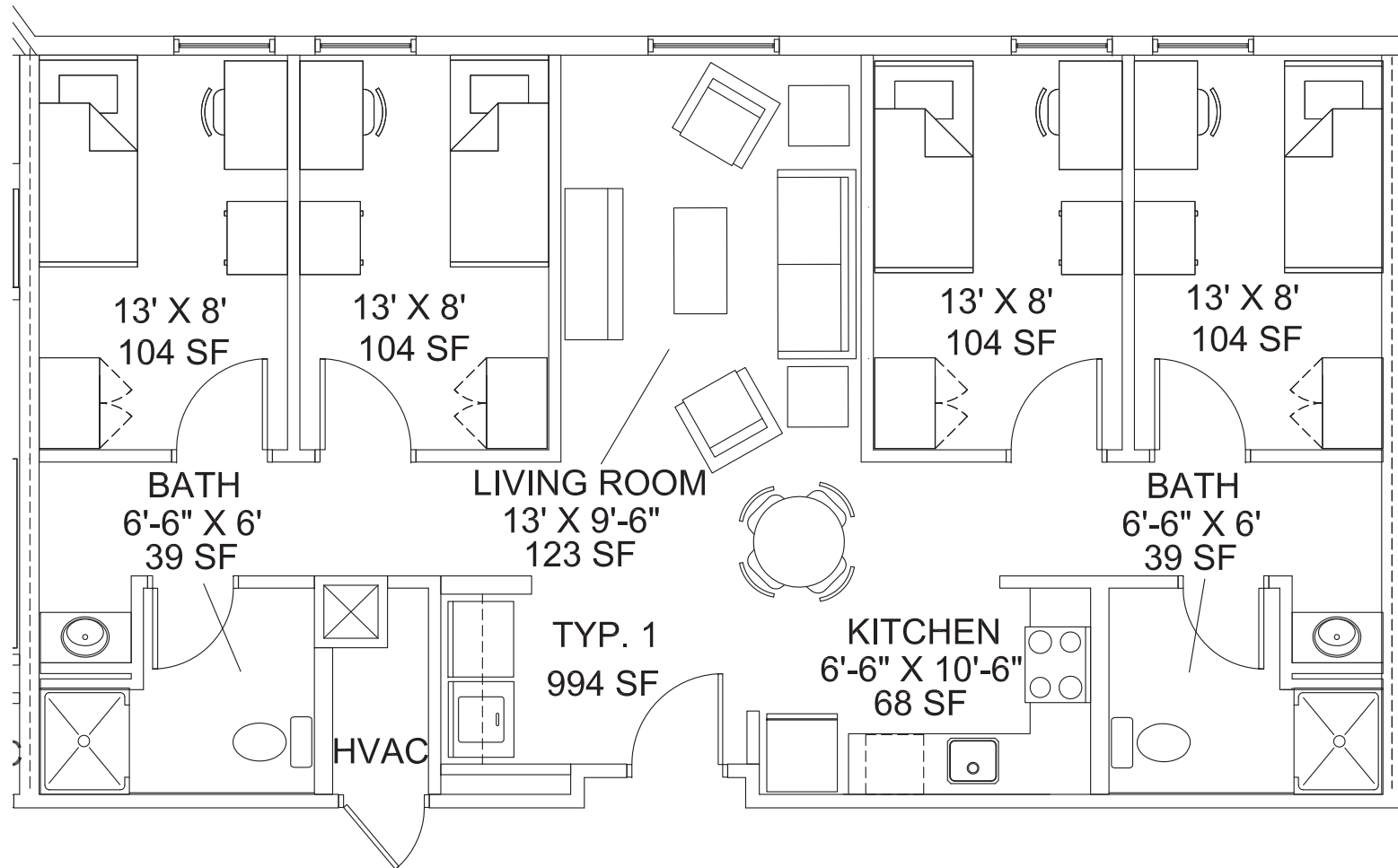
**AREA E - FIFTH FLOOR**  
NOT TO SCALE

VCU Facilities Management

700 West Grace Street  
Richmond, Va 23284

Phone: 804-828-7006  
Fax: 804-828-6617

<http://www.vcu.edu/fmd/>



**FURNITURE TYPICAL 1  
FOUR BEDROOM APARTMENT**

NOT TO SCALE

Not Plotted to Scale

Created By:	Date:
KSA	1/2011

Revised By:	Date:

Building Number:	XXX
------------------	-----

Building Name:	BELVIDERE & CARY ST DORM FACILITY
----------------	--------------------------------------

TYP 1	Floor Number: 00
-------	---------------------

Not Plotted to Scale

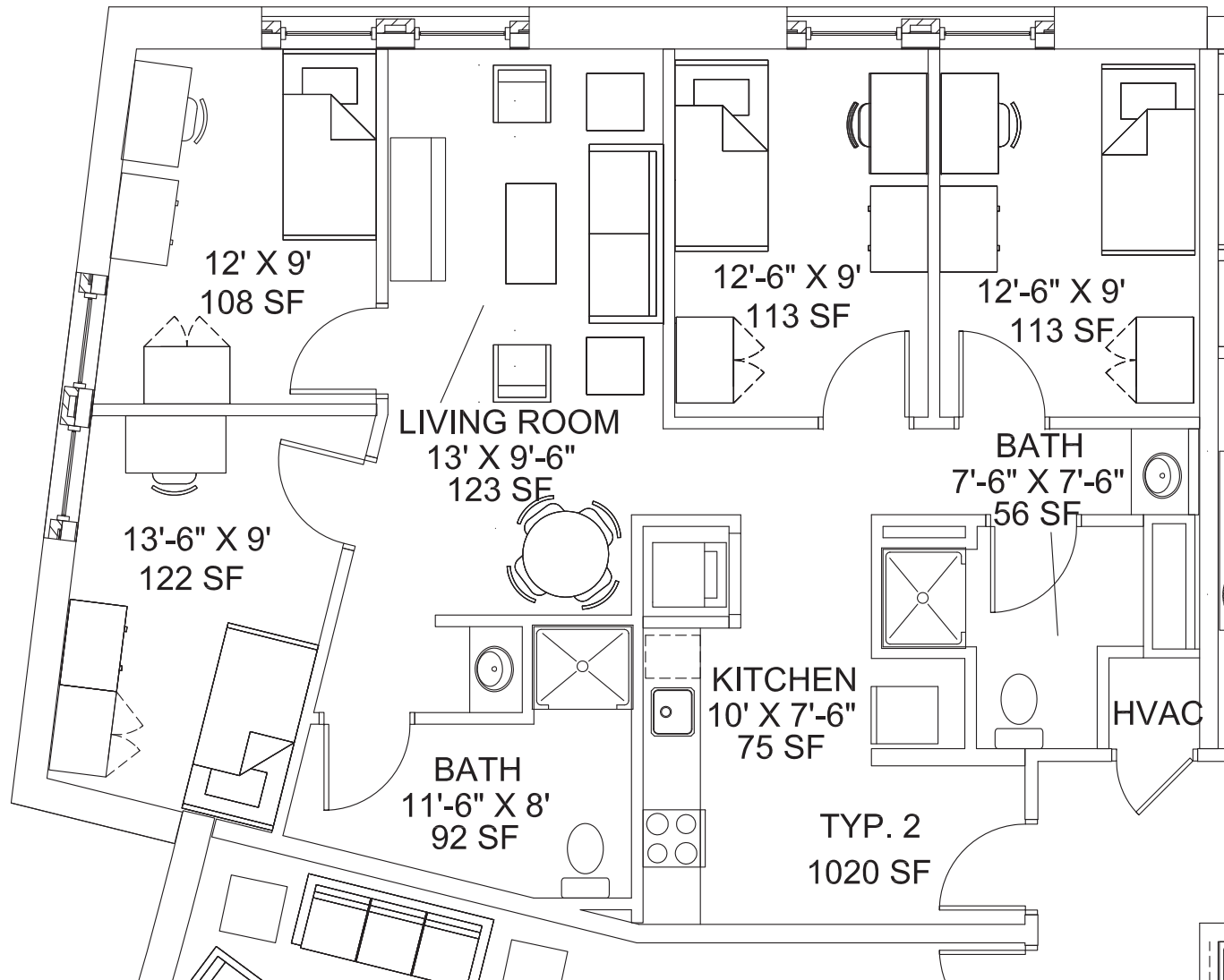
Created By:	Date:
KSA	1/2011

Revised By:	Date:

Building Number:	XXX
------------------	-----

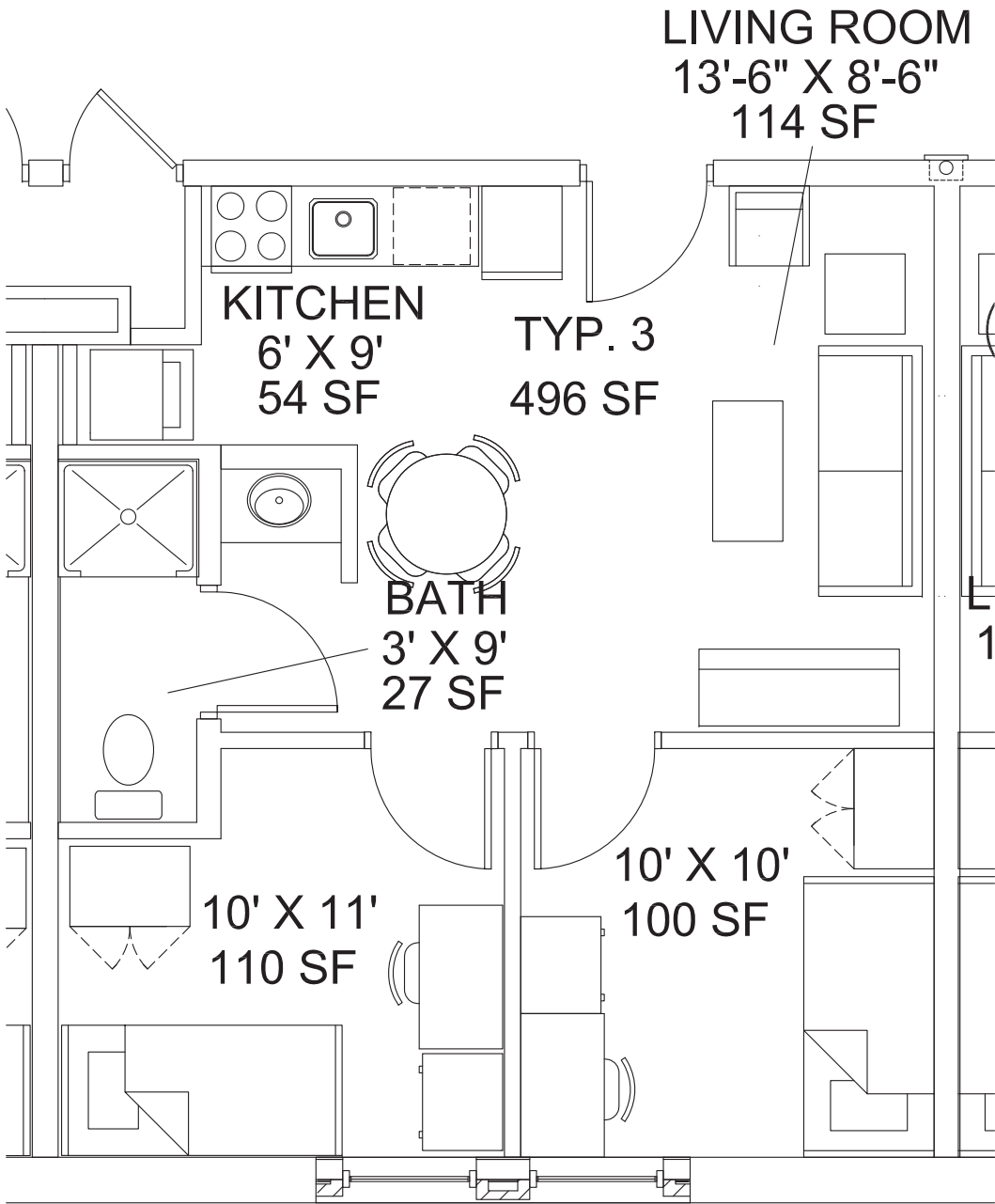
Building Name:	BELVIDERE & CARY ST DORM FACILITY
----------------	--------------------------------------

TYP 2	Floor Number: 00
-------	---------------------



**FURNITURE TYPICAL 2  
FOUR BEDROOM APARTMENT**

NOT TO SCALE



**LIVING ROOM**  
 13'-6" X 8'-6"  
 114 SF

**KITCHEN**  
 6' X 9'  
 54 SF

**TYP. 3**  
 496 SF

**BATH**  
 3' X 9'  
 27 SF

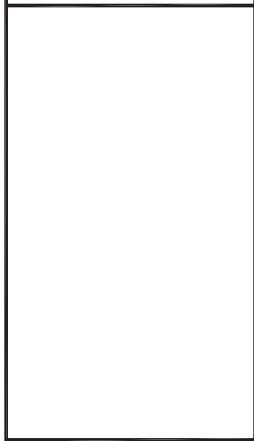
**10' X 11'**  
 110 SF

**10' X 10'**  
 100 SF

**E**  
**1**

**FURNITURE TYPICAL 3**  
**TWO BEDROOM APARTMENT**  
 NOT TO SCALE

VCU Facilities Management  
 700 West Grace Street  
 Richmond, Va 23284  
 Phone: 804-828-7006  
 Fax: 804-828-6617  
<http://www.vcu.edu/fmd/>



Not Plotted to Scale

Created By:	Date:
KSA	1/2011

Revised By:	Date:


Building Number:	XXX
------------------	-----

Building Name:	BELVIDERE & CARY ST DORM FACILITY
----------------	--------------------------------------

TYP 3	Floor Number: 00
-------	---------------------

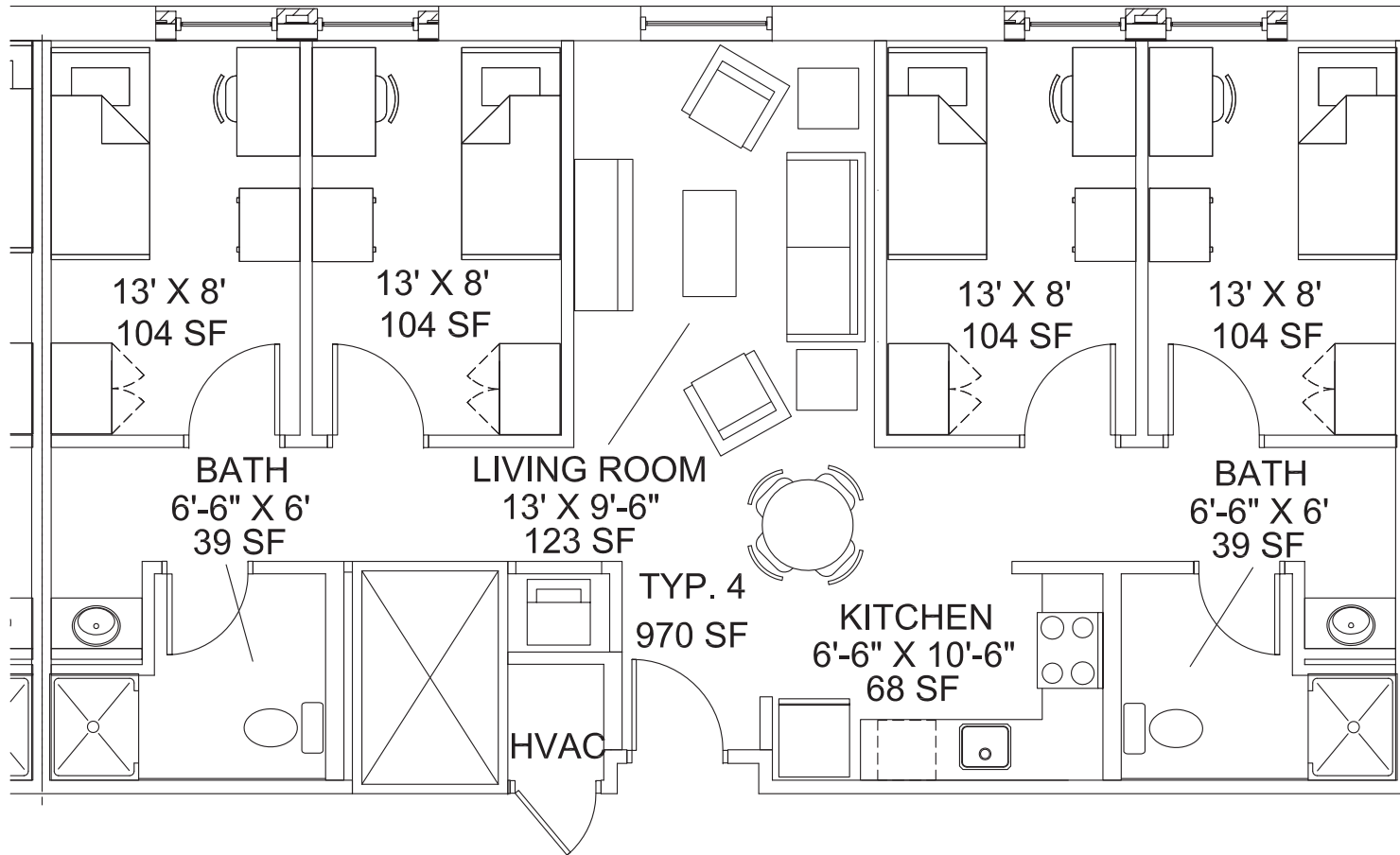


VCU Facilities Management

700 West Grace Street  
Richmond, Va 23284

Phone: 804-828-7006  
Fax: 804-828-6617

<http://www.vcu.edu/fmd/>



**FURNITURE TYPICAL 4  
FOUR BEDROOM APARTMENT**

NOT TO SCALE

Not Plotted to Scale

Created By:	Date:
KSA	1/2011

Revised By:	Date:

Building Number:	XXX
------------------	-----

Building Name:	BELVIDERE & CARY ST DORM FACILITY
----------------	--------------------------------------

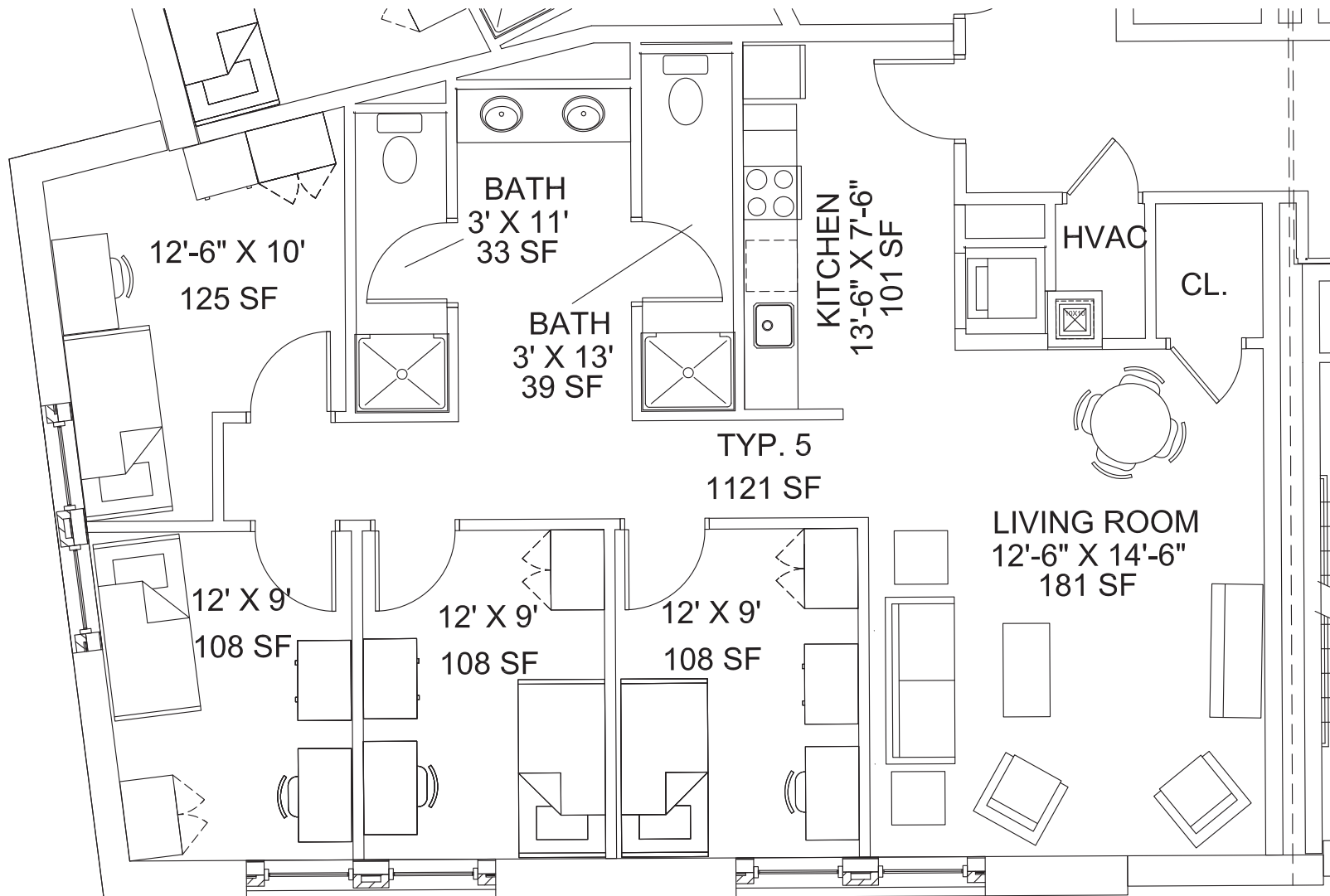
TYP 4	Floor Number: 00
-------	---------------------

VCU Facilities Management

700 West Grace Street  
Richmond, Va 23284

Phone: 804-828-7006  
Fax: 804-828-6617

<http://www.vcu.edu/fmd/>



Not Plotted to Scale

Created By:	Date:
KSA	1/2011

Revised By:	Date:

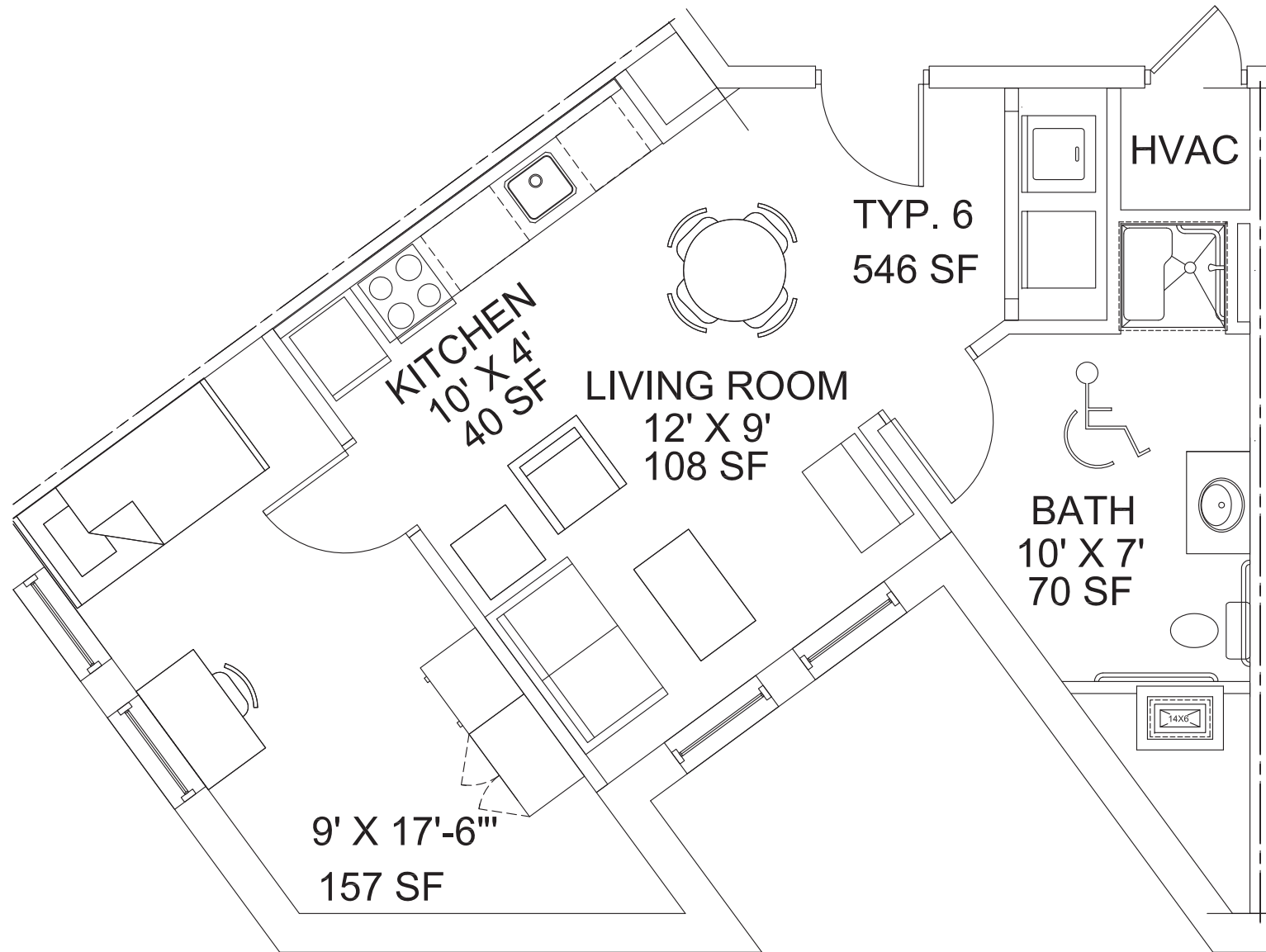
Building Number:	XXX
------------------	-----

Building Name:	BELVIDERE & CARY ST DORM FACILITY
----------------	--------------------------------------

TYP 5	Floor Number: 00
-------	---------------------

### FURNITURE TYPICAL 5 FOUR BEDROOM APARTMENT

NOT TO SCALE



**FURNITURE TYPICAL 6 RA ADA  
SINGLE BEDROOM APARTMENT**

NOT TO SCALE

VCU Facilities Management

700 West Grace Street  
Richmond, Va 23284

Phone: 804-828-7006  
Fax: 804-828-6617

<http://www.vcu.edu/fmd/>

Not Plotted to Scale

Created By:	Date:
KSA	1/2011

Revised By:	Date:

Building Number:	XXX
------------------	-----

Building Name:	BELVIDERE & CARY ST DORM FACILITY
----------------	--------------------------------------

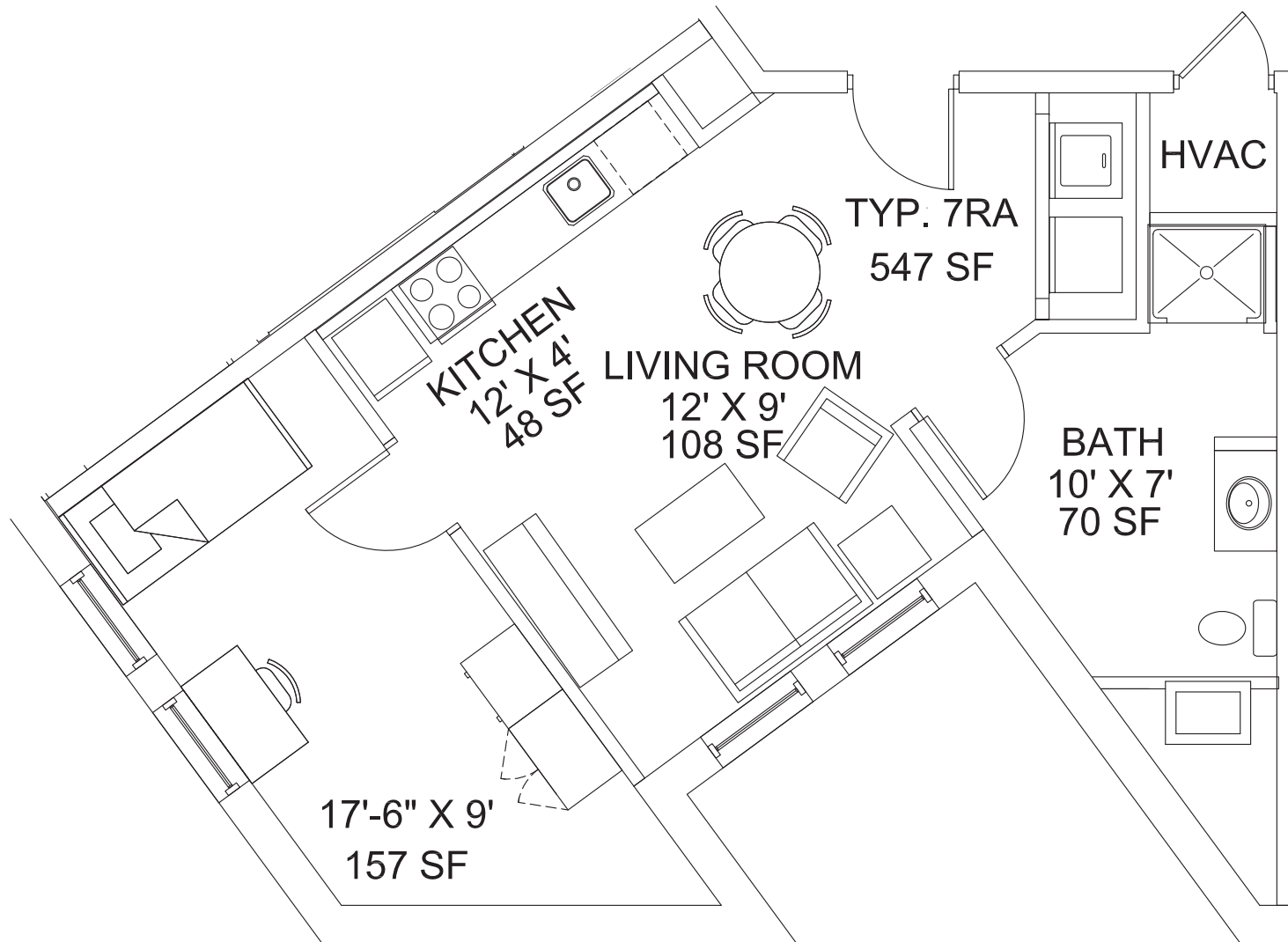
TYP 6 RA ADA	Floor Number: 00
-----------------	---------------------

VCU Facilities Management

700 West Grace Street  
Richmond, Va 23284

Phone: 804-828-7006  
Fax: 804-828-6617

<http://www.vcu.edu/fmd/>



Not Plotted to Scale

Created By:	Date:
KSA	1/2011

Revised By:	Date:

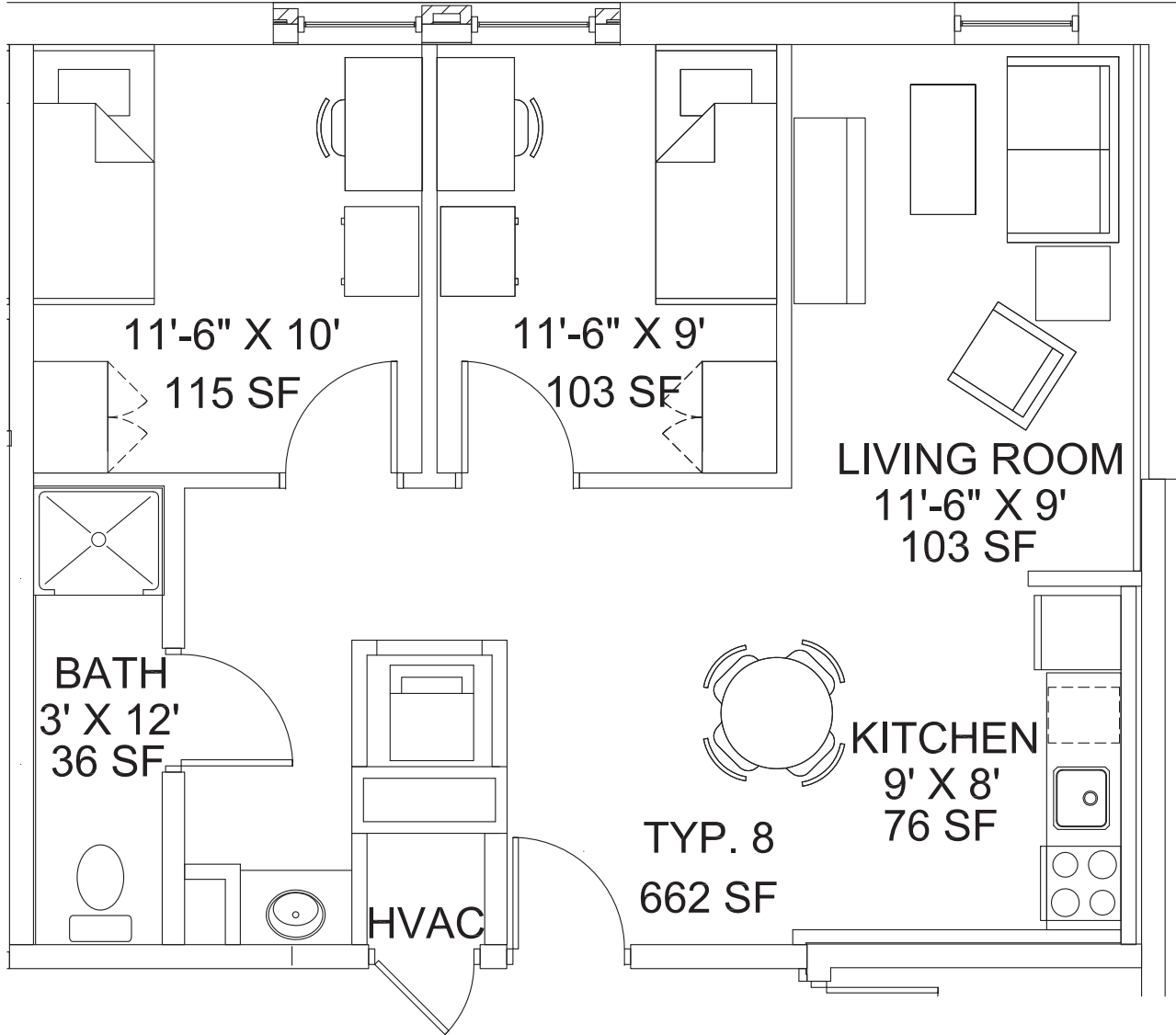
Building Number:	XXX
------------------	-----

Building Name:	BELVIDERE & CARY ST DORM FACILITY
----------------	--------------------------------------

<b>TYP 7</b> RA	Floor Number: 00
--------------------	---------------------

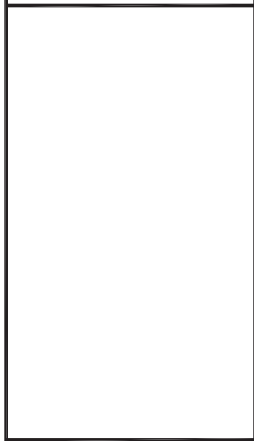
**FURNITURE TYPICAL 7 RA**  
**SINGLE BEDROOM APARTMENT**

NOT TO SCALE



**FURNITURE TYPICAL 8**  
**TWO BEDROOM APARTMENT**  
 NOT TO SCALE

VCU Facilities Management  
 700 West Grace Street  
 Richmond, Va 23284  
 Phone: 804-828-7006  
 Fax: 804-828-6617  
<http://www.vcu.edu/fmd/>



Not Plotted to Scale

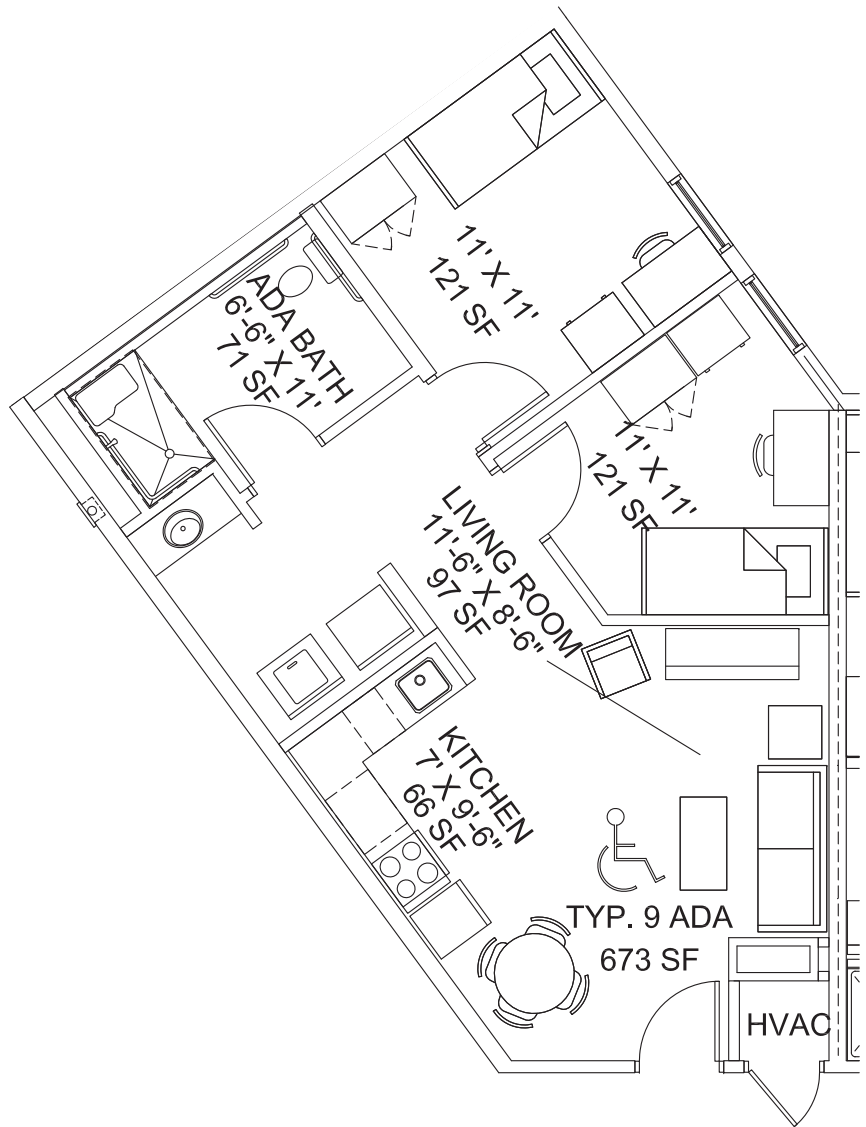
Created By:	Date:
KSA	1/2011

Revised By:	Date:


Building Number:	XXX
------------------	-----

Building Name:	BELVIDERE & CARY ST DORM FACILITY
----------------	--------------------------------------

TYP 8	Floor Number: 00
-------	---------------------



**FURNITURE TYPICAL 9 ADA  
TWO BEDROOM APARTMENT**

NOT TO SCALE

VCU Facilities Management  
  
700 West Grace Street  
Richmond, Va 23284  
  
Phone: 804-828-7006  
Fax: 804-828-6617  
  
<http://www.vcu.edu/fmd/>

Not Plotted to Scale

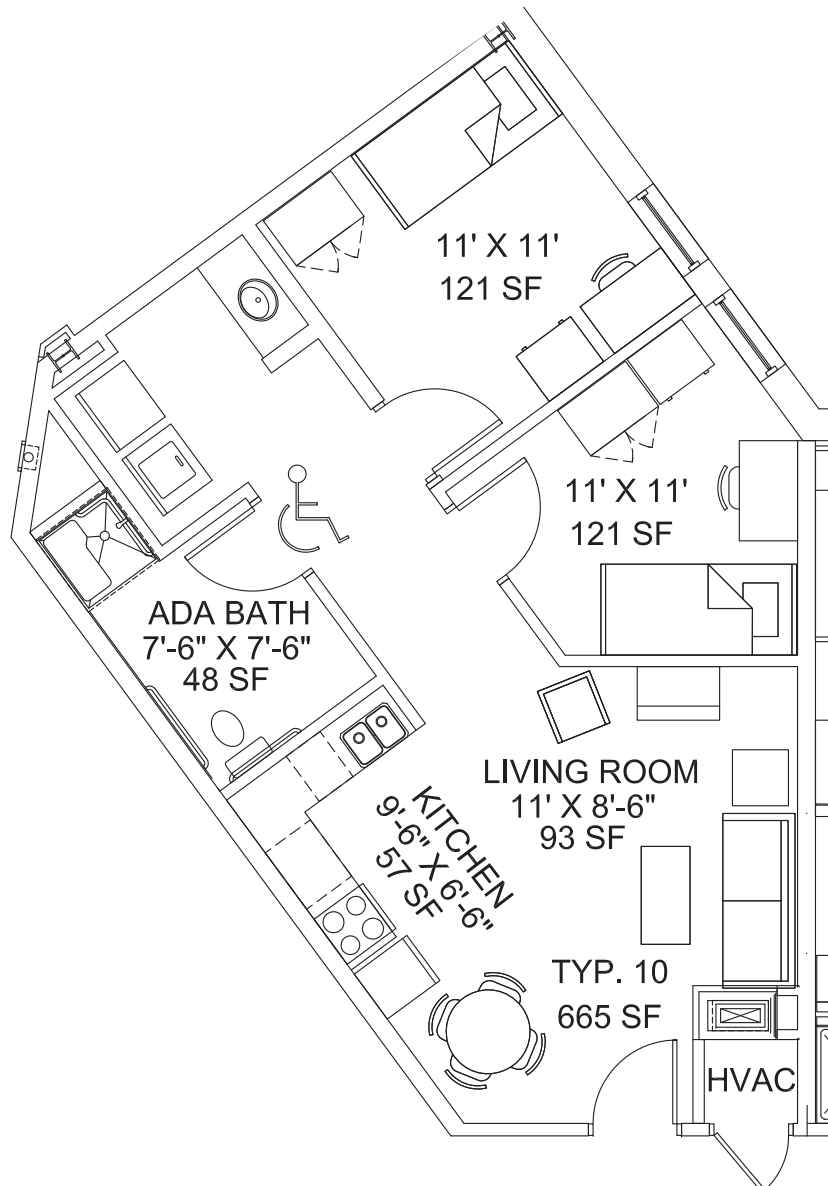
Created By:	Date:
KSA	1/2011
Revised By:	Date:
Building Number:	XXX
Building Name:	BELVIDERE & CARY ST DORM FACILITY
TYP 9 ADA	Floor Number: 00

VCU Facilities Management

700 West Grace Street  
Richmond, Va 23284

Phone: 804-828-7006  
Fax: 804-828-6617

<http://www.vcu.edu/fmd/>



**FURNITURE TYPICAL 10 ADA  
TWO BEDROOM APARTMENT**

NOT TO SCALE

Not Plotted to Scale

Created By:	Date:
KSA	1/2011

Revised By:	Date:

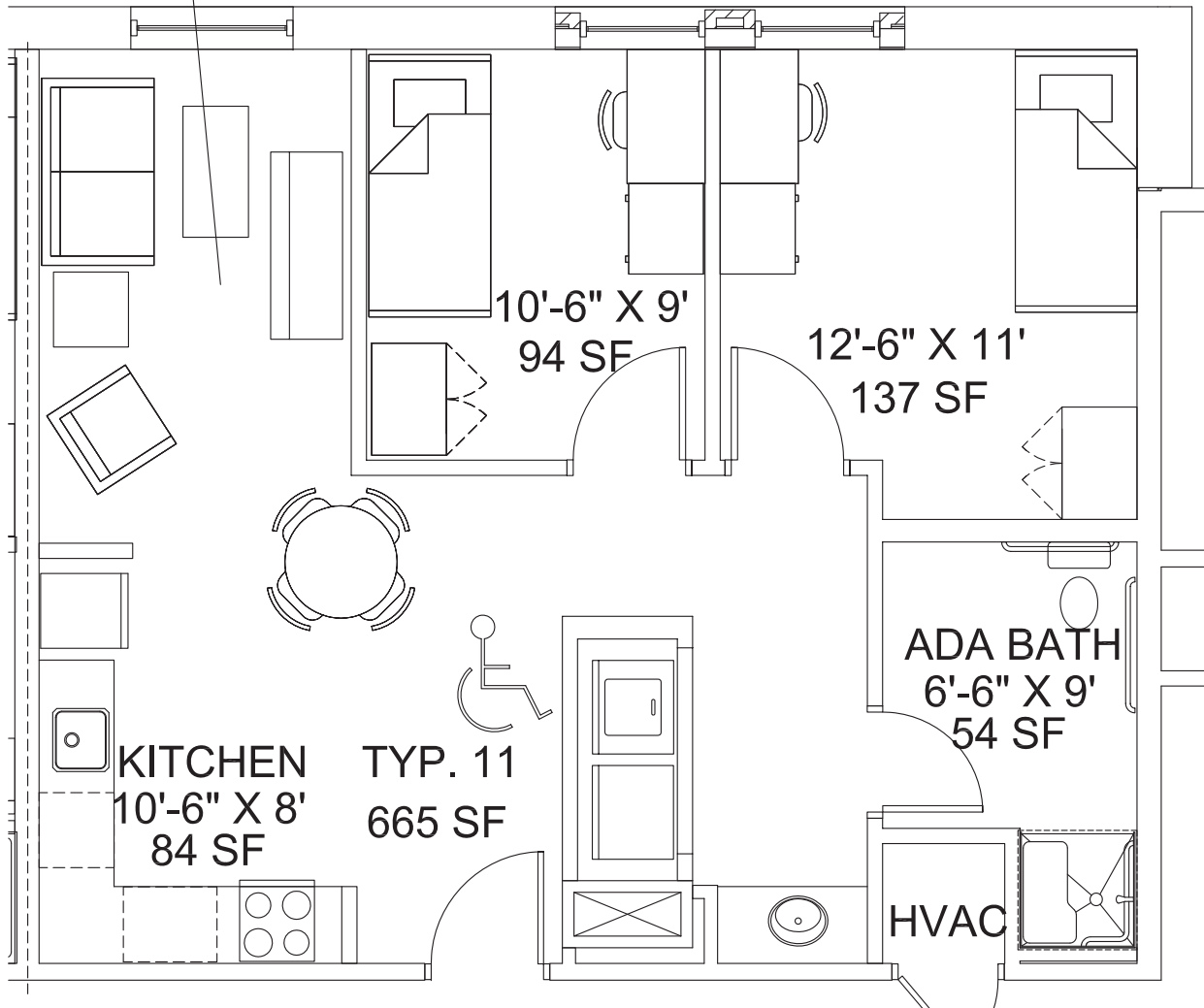
Building Number:	XXX
------------------	-----

Building Name:	BELVIDERE & CARY ST DORM FACILITY
----------------	--------------------------------------

TYP 10 ADA	Floor Number: 00
---------------	---------------------

**LIVING ROOM**

13' X 8'  
104 SF



**FURNITURE TYPICAL 11 ADA  
TWO BEDROOM APARTMENT**

NOT TO SCALE

VCU Facilities Management

700 West Grace Street  
Richmond, Va 23284

Phone: 804-828-7006  
Fax: 804-828-6617

<http://www.vcu.edu/fmd/>

Not Plotted to Scale

Created By:	Date:
KSA	1/2011

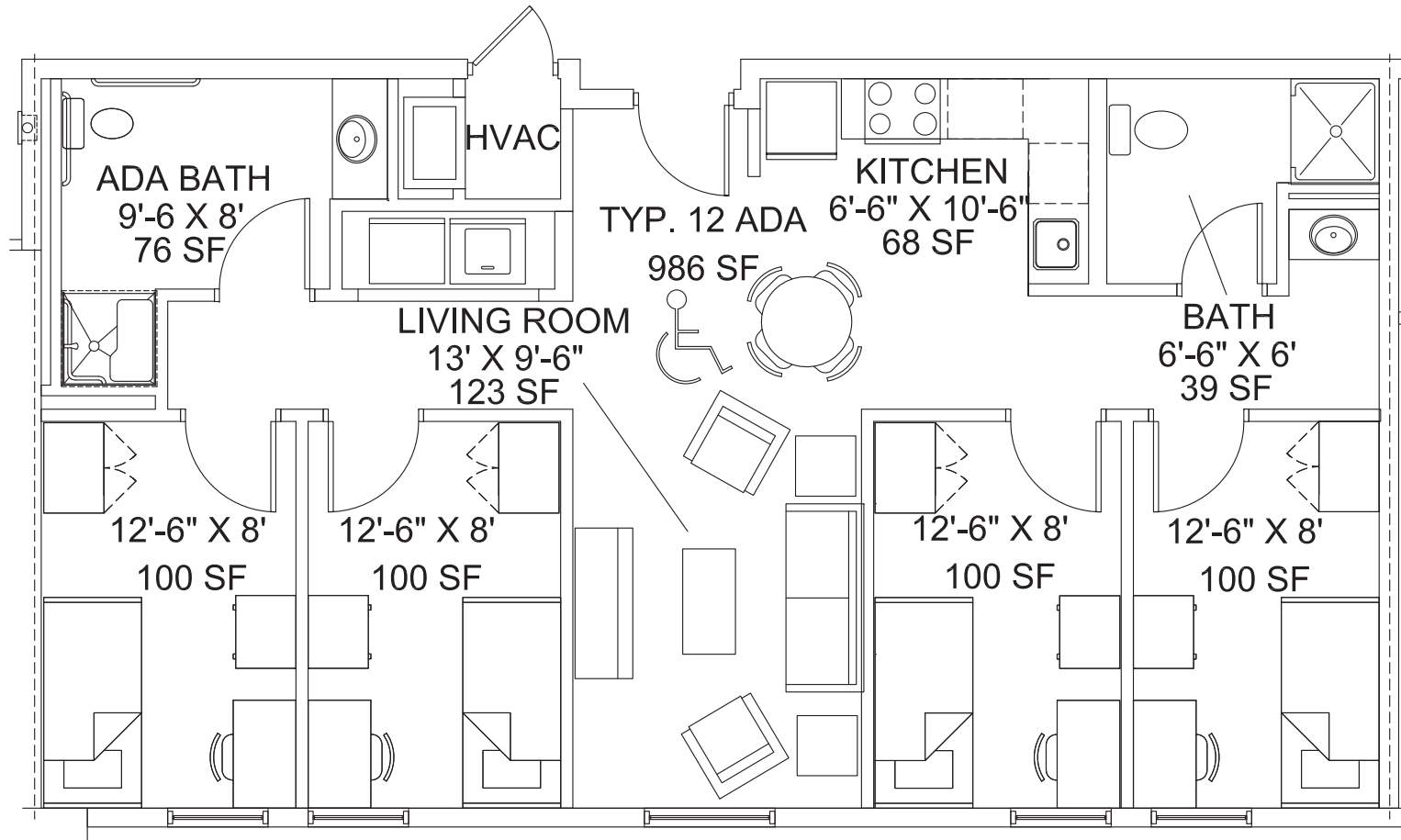
Revised By:	Date:

Building Number:	XXX
------------------	-----

Building Name:	BELVIDERE & CARY ST DORM FACILITY
----------------	--------------------------------------

TYP 11 ADA	Floor Number: 00
---------------	---------------------





**FURNITURE TYPICAL 12 ADA  
FOUR BEDROOM APARTMENT**

NOT TO SCALE

Not Plotted to Scale

Created By:	Date:
KSA	1/2011

Revised By:	Date:

Building Number:	XXX
------------------	-----

Building Name:	BELVIDERE & CARY ST DORM FACILITY
----------------	--------------------------------------

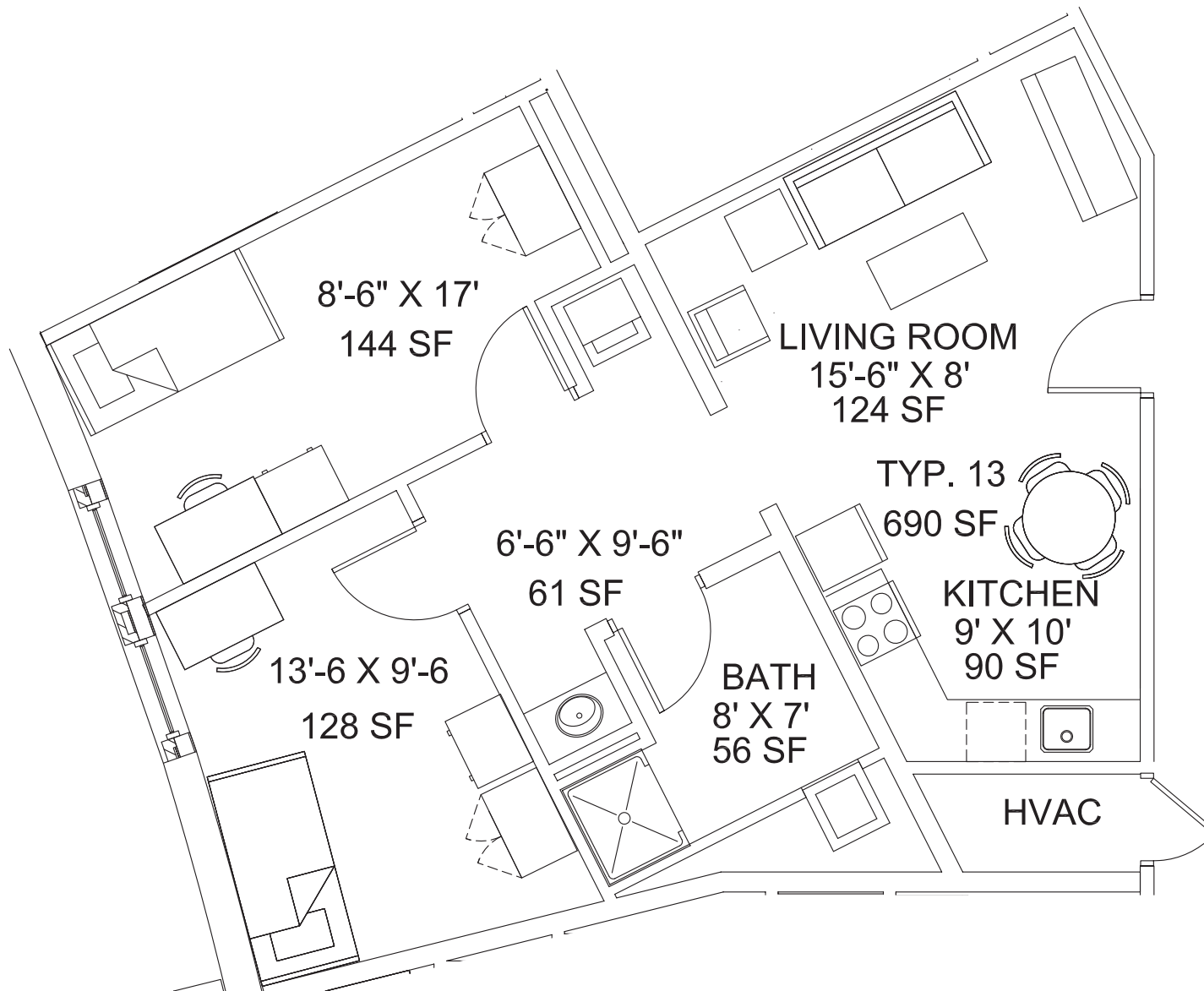
TYP 12 ADA	Floor Number: 00
---------------	---------------------

VCU Facilities Management

700 West Grace Street  
Richmond, Va 23284

Phone: 804-828-7006  
Fax: 804-828-6617

<http://www.vcu.edu/fmd/>



**FURNITURE TYPICAL 13**  
**TWO BEDROOM APARTMENT**

NOT TO SCALE

Not Plotted to Scale

Created By:	Date:
KSA	1/2011

Revised By:	Date:

Building Number:	XXX
------------------	-----

Building Name:	BELVIDERE & CARY ST DORM FACILITY
----------------	--------------------------------------

TYP 13	Floor Number: 00
--------	---------------------



**FURNITURE TYPICAL 14  
TWO BEDROOM APARTMENT**

NOT TO SCALE

VCU Facilities Management

700 West Grace Street  
Richmond, Va 23284

Phone: 804-828-7006  
Fax: 804-828-6617

<http://www.vcu.edu/fmd/>

Not Plotted to Scale

Created By:	Date:
KSA	1/2011

Revised By:	Date:

Building Number:	XXX
------------------	-----

Building Name:	BELVIDERE & CARY ST DORM FACILITY
----------------	--------------------------------------

TYP 14	Floor Number: 00
--------	---------------------

VCU Facilities Management

700 West Grace Street  
Richmond, Va 23284

Phone: 804-828-7006  
Fax: 804-828-6617

<http://www.vcu.edu/fmd/>

Not Plotted to Scale

Created By:	Date:
KSA	1/2011

Revised By:	Date:

Building Number:	XXX
------------------	-----

Building Name:	BELVIDERE & CARY ST DORM FACILITY
----------------	--------------------------------------

TYP 15 ADA	Floor Number: 00
---------------	---------------------



**FURNITURE TYPICAL 15 ADA  
TWO BEDROOM APARTMENT**

NOT TO SCALE

VCU Facilities Management

700 West Grace Street  
Richmond, Va 23284

Phone: 804-828-7006  
Fax: 804-828-6617

<http://www.vcu.edu/fmd/>

Not Plotted to Scale

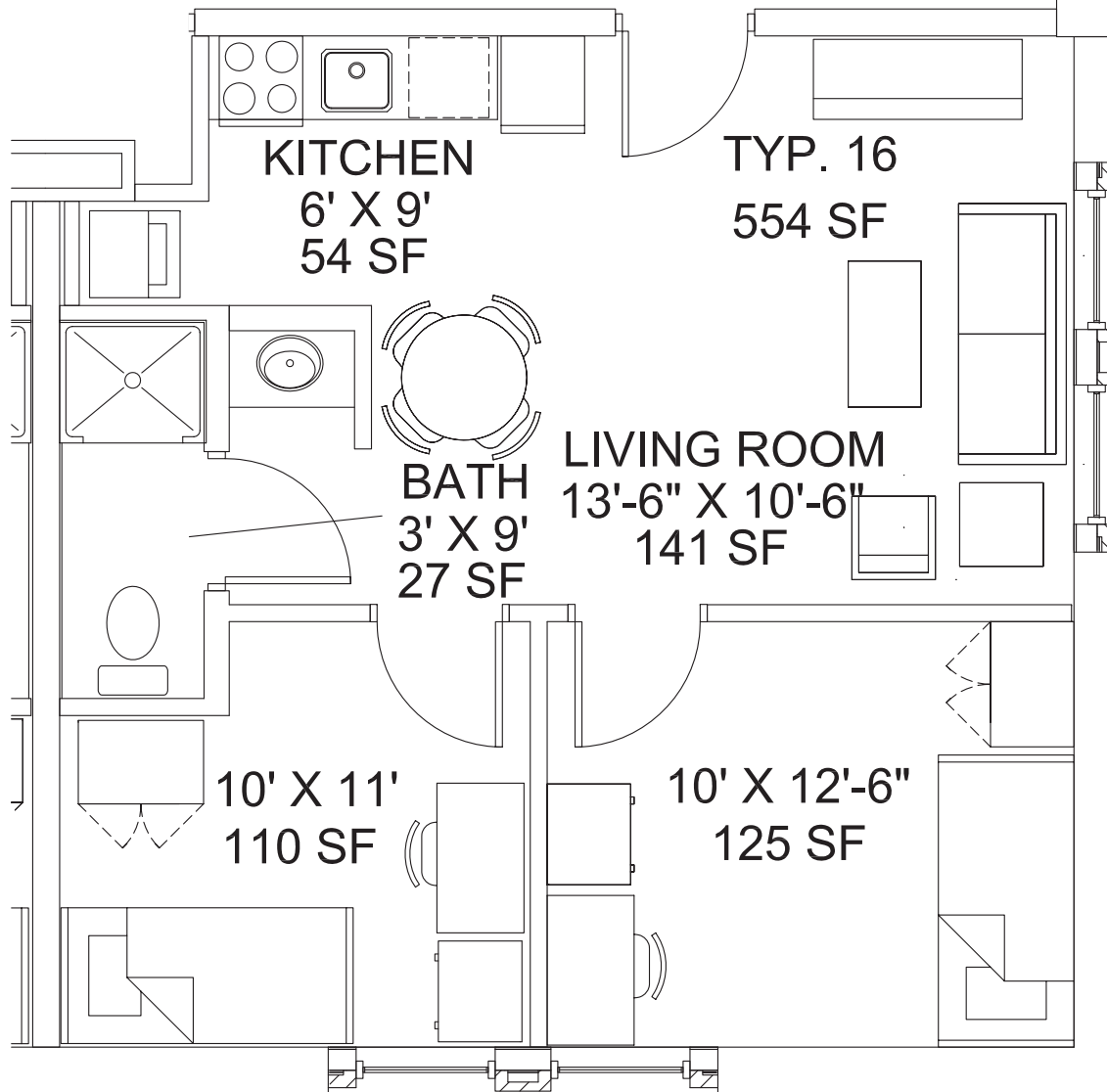
Created By:	Date:
KSA	1/2011

Revised By:	Date:

Building Number:	XXX
------------------	-----

Building Name:	BELVIDERE & CARY ST DORM FACILITY
----------------	--------------------------------------

TYP 16	Floor Number: 00
--------	---------------------



FURNITURE TYPICAL 16  
TWO BEDROOM APARTMENT  
NOT TO SCALE