

1 FURNITURE PLAN @ GRACE-HARRISON 1ST FLOOR
 F1.1 SCALE: 1/8"=1'-0"

PI PYE INTERIORS
 100 10th Street, NE
 Suite 201
 Charlottesville, VA 22902
 +1 434 971 1393
 +1 434 971 1785 fax
 pyeinteriors.com

VIRGINIA COMMONWEALTH UNIVERSITY
 GRACE-HARRISON / BROAD-RYLAND
 RICHMOND, VIRGINIA

CLIENT CONTACT:
 MICHELE APPELEGATE
 VCU

DESIGN CONTACT:
 SHEILA HOOPMANN
 PYE INTERIORS
 434.971.1393

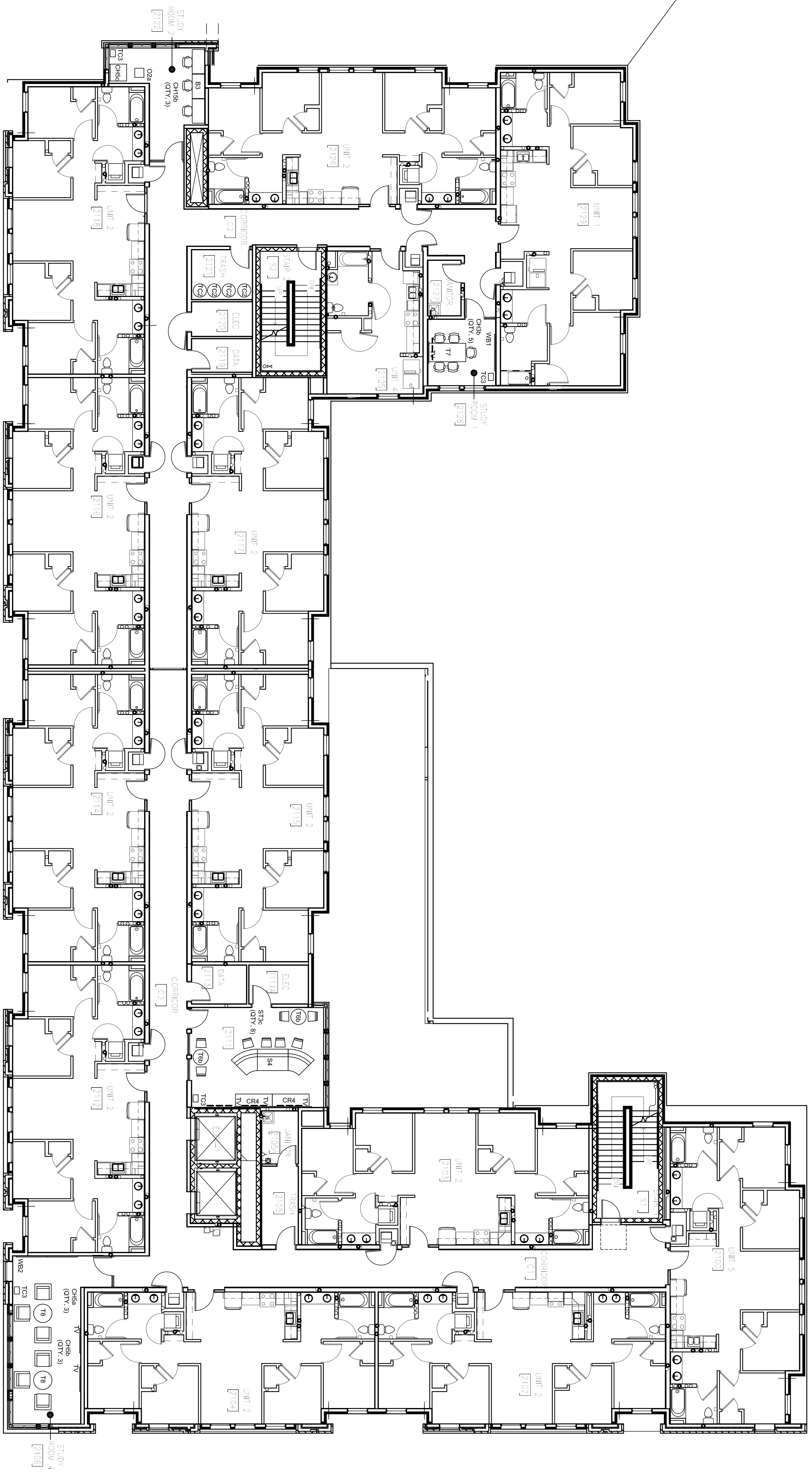
PROJECT NUMBER:
 1325

SCALE: 1/8"=1'-0"
 DRAWN BY: SH
 CHECKED BY: LP
 DATE: 12.8.14

FURNITURE PLAN:
 GH 1ST FLOOR

SHEET NUMBER:
F1.1

INSPIRING SPACES EDUCATION | HEALTHCARE | CORPORATE



1 FURNITURE PLAN @ GRACE-HARRISON 2ND FLOOR
 F1.2 SCALE: 1/8" = 1'-0"

PI PYE INTERIORS
 100 10th Street, NE
 Suite 201
 Charlottesville, VA 22902
 +1 434 971 1393
 +1 434 971 1785 fax
 pyeinteriors.com
 INSPIRING SPACES EDUCATION | HEALTHCARE | CORPORATE

VIRGINIA COMMONWEALTH UNIVERSITY
 GRACE-HARRISON / BROAD-RYLAND
 RICHMOND, VIRGINIA

REVISIONS
 CLIENT CONTACT:
 MICHELE APPELEGATE
 VCU

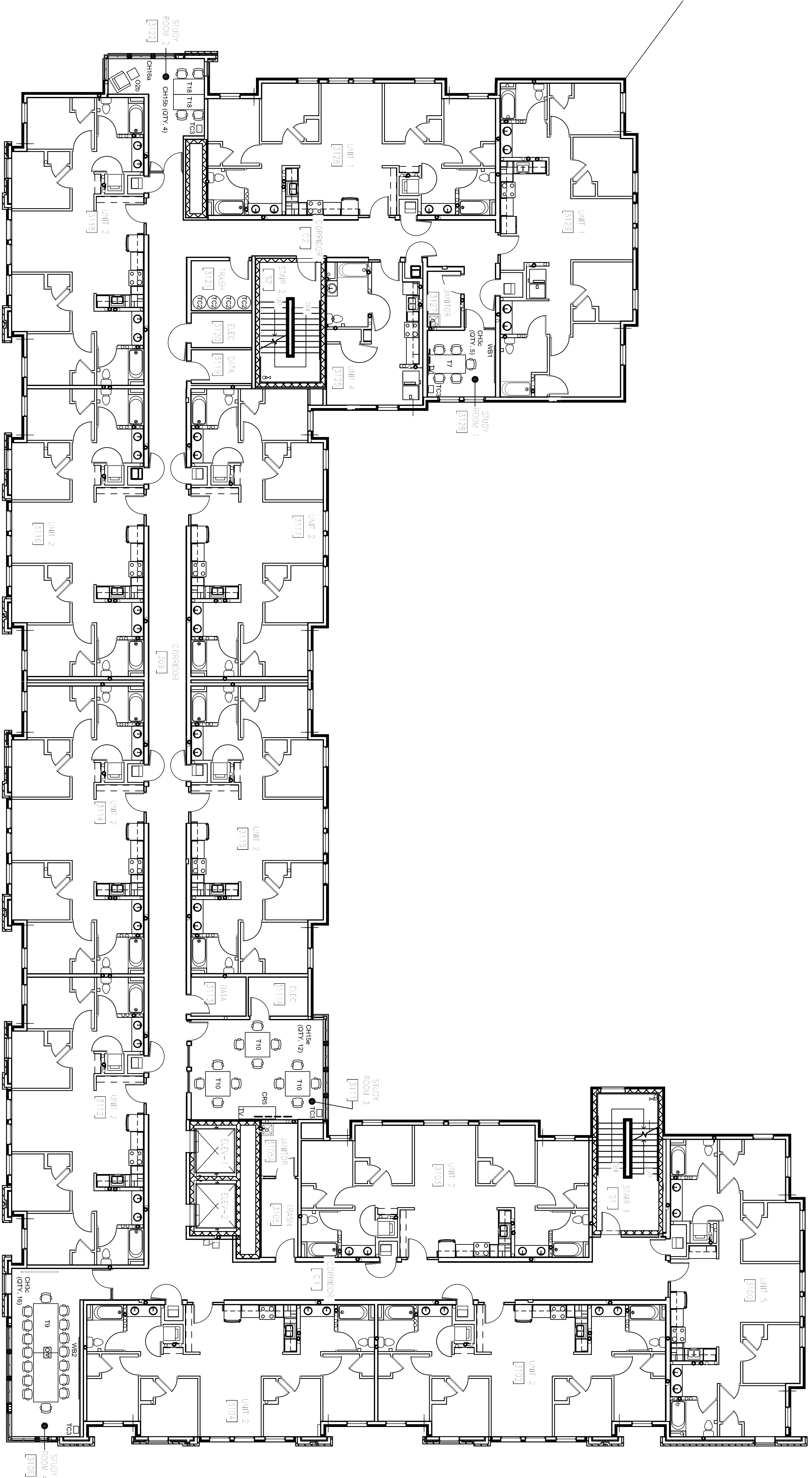
DESIGN CONTACT:
 SHEILA HOOPMANN
 PYE INTERIORS
 434.971.1393

PROJECT NUMBER:
 1325

SCALE: 1/8"=1'-0"
 DRAWN BY: SH
 CHECKED BY: LP
 DATE: 12.8.14

FURNITURE PLAN:
 GH 2ND FLOOR

SHEET NUMBER:
F1.2



1 FURNITURE PLAN @ GRACE-HARRISON 3RD FLOOR
 F1.3 SCALE: 1/8" = 1'-0"

PI PYE INTERIORS
 100 10th Street, NE Suite 201
 Charlottesville, VA 22902
 +1 434 971 1393
 +1 434 971 1785 fax
 pyeinteriors.com
 INSPIRING SPACES EDUCATION | HEALTHCARE | CORPORATE

VIRGINIA COMMONWEALTH UNIVERSITY
 GRACE-HARRISON / BROAD-RYLAND
 RICHMOND, VIRGINIA

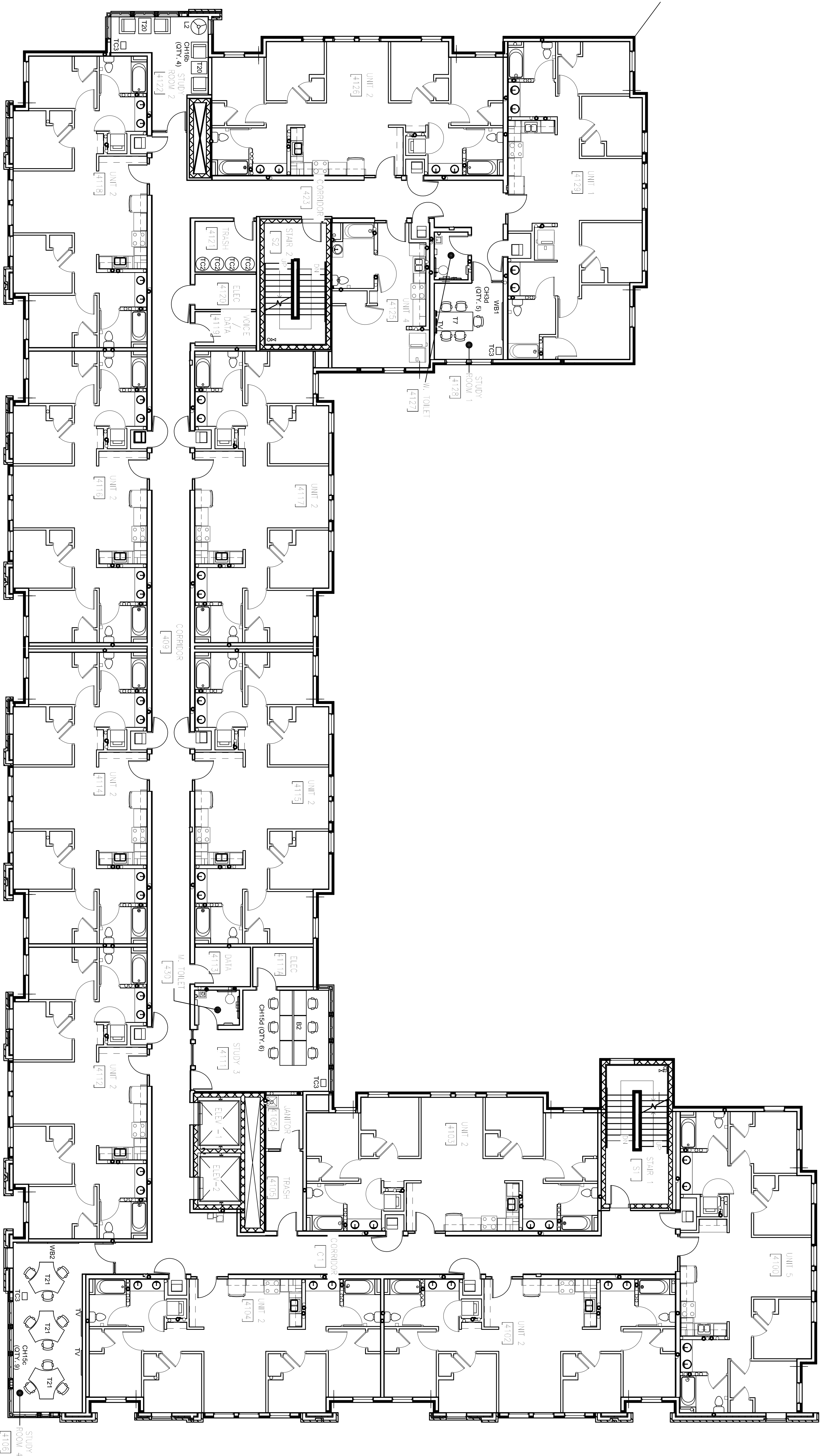
CLIENT CONTACT:
 MICHELE APPELEGANTE
 VCU
 DESIGN CONTACT:
 SHEILA HOOPMANN
 PYE INTERIORS
 434.971.1393

PROJECT NUMBER:
 1325

SCALE: 1/8"=1'-0"
 DRAWN BY: SH
 CHECKED BY: LP
 DATE: 12.8.14

FURNITURE PLAN:
 GH 3RD FLOOR

SHEET NUMBER:
F1.3



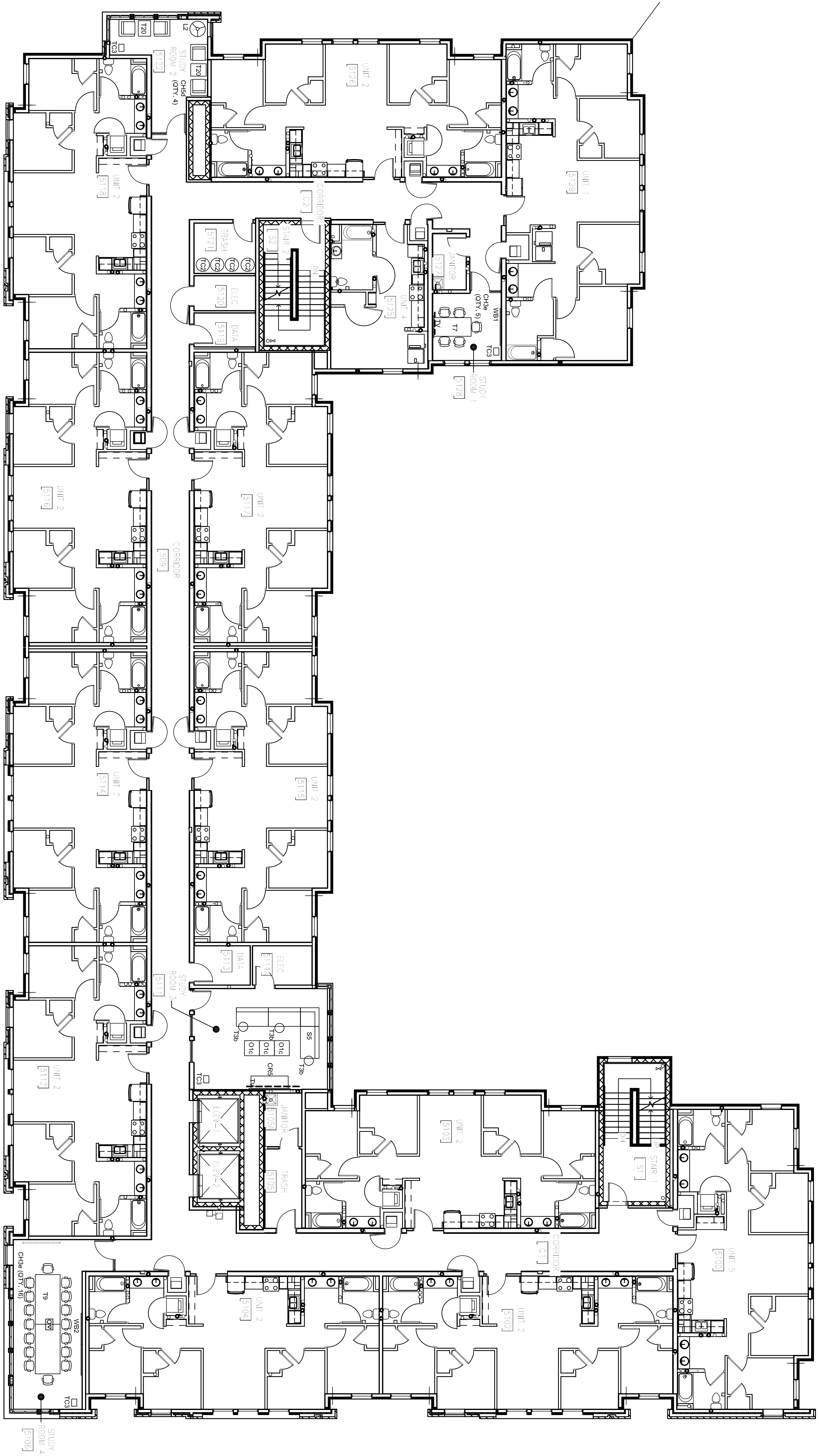
1 FURNITURE PLAN @ GRACE-HARRISON 4TH FLOOR
 F1.4 SCALE: 1/8" = 1'-0"

PI PYE INTERIORS
 100 10th Street, NE Suite 201
 Charlottesville, VA 22902
 +1 434 971 1393
 +1 434 971 1785 fax
 pyeinteriors.com
 INSPIRING SPACES EDUCATION | HEALTHCARE | CORPORATE

VIRGINIA COMMONWEALTH UNIVERSITY
 GRACE-HARRISON / BROAD-RYLAND
 RICHMOND, VIRGINIA

| | | |
|---|--|-----------|
| DESIGN CONTACT: SHEILA HOOPMANN PYE INTERIORS 434.971.1393 | CLIENT CONTACT: MICHELE APPELEGATE VCU | REVISIONS |
| PROJECT NUMBER: 1325 | SCALE: 1/8"=1'-0" | |
| DRAWN BY: SH | CHECKED BY: LP | |
| DATE: 12.8.14 | | |

SHEET NUMBER:
F1.4
 FURNITURE PLAN:
 GH 4TH FLOOR



1 FURNITURE PLAN @ GRACE-HARRISON 5TH FLOOR
 F1.5 SCALE: 1/8"=1'-0"

PROJECT NUMBER:
1325

SCALE: 1/8"=1'-0"
 DRAWN BY: SH
 CHECKED BY: LP
 DATE: 12.8.14

FURNITURE PLAN:
 GH 5TH FLOOR

SHEET NUMBER:
F1.5

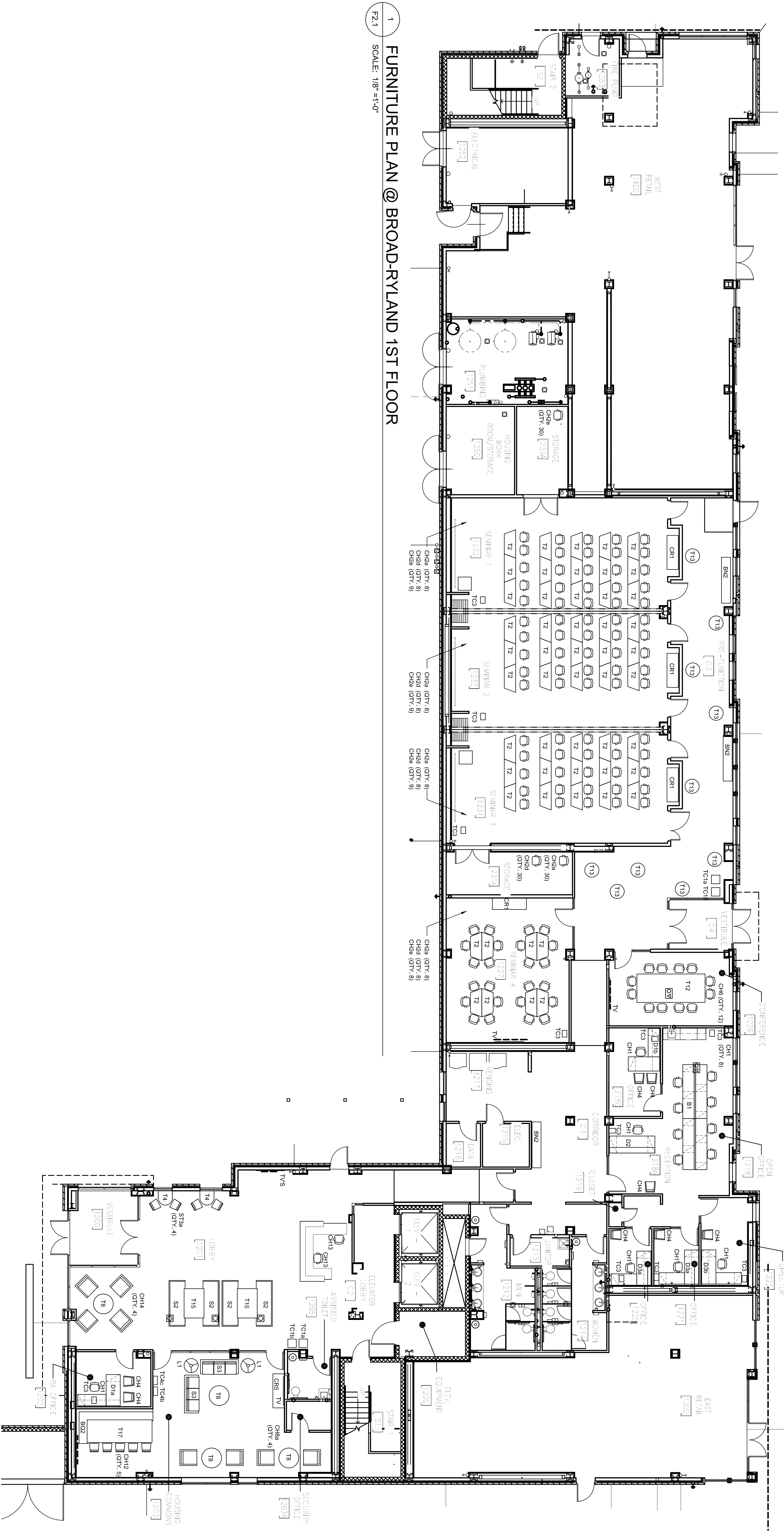
DESIGN CONTACT:
 SHEILA HOOPMANN
 PYE INTERIORS
 434.971.1393

CLIENT CONTACT:
 MICHELE APPELEGATE
 VCU

| REVISIONS |
|-----------|
| |
| |
| |

VIRGINIA COMMONWEALTH UNIVERSITY
 GRACE-HARRISON / BROAD-RYLAND
 RICHMOND, VIRGINIA

PI PYE INTERIORS
 100 10th Street, NE Suite 201
 Charlottesville, VA 22902
 +1 434 971 1393
 +1 434 971 1785 fax
 pyeinteriors.com
 INSPIRING SPACES EDUCATION | HEALTHCARE | CORPORATE



1 FURNITURE PLAN @ BROAD-RYLAND 1ST FLOOR
 SCALE: 1/8" = 1'-0"

VIRGINIA COMMONWEALTH UNIVERSITY
 GRACE-HARRISON / BROAD-RYLAND
 RICHMOND, VIRGINIA

PI PYE INTERIORS
 100 10th Street, NE Suite 201
 Charlottesville, VA 22902
 +1 434 971 1393
 +1 434 971 1785 fax
 pyeinteriors.com
 INSPIRING SPACES EDUCATION | HEALTHCARE | CORPORATE

CLIENT CONTACT:
 MICHELE APPELEGATE
 VCU
 DESIGN CONTACT:
 SHEILA HOOPMANN
 PYE INTERIORS
 434.971.1393

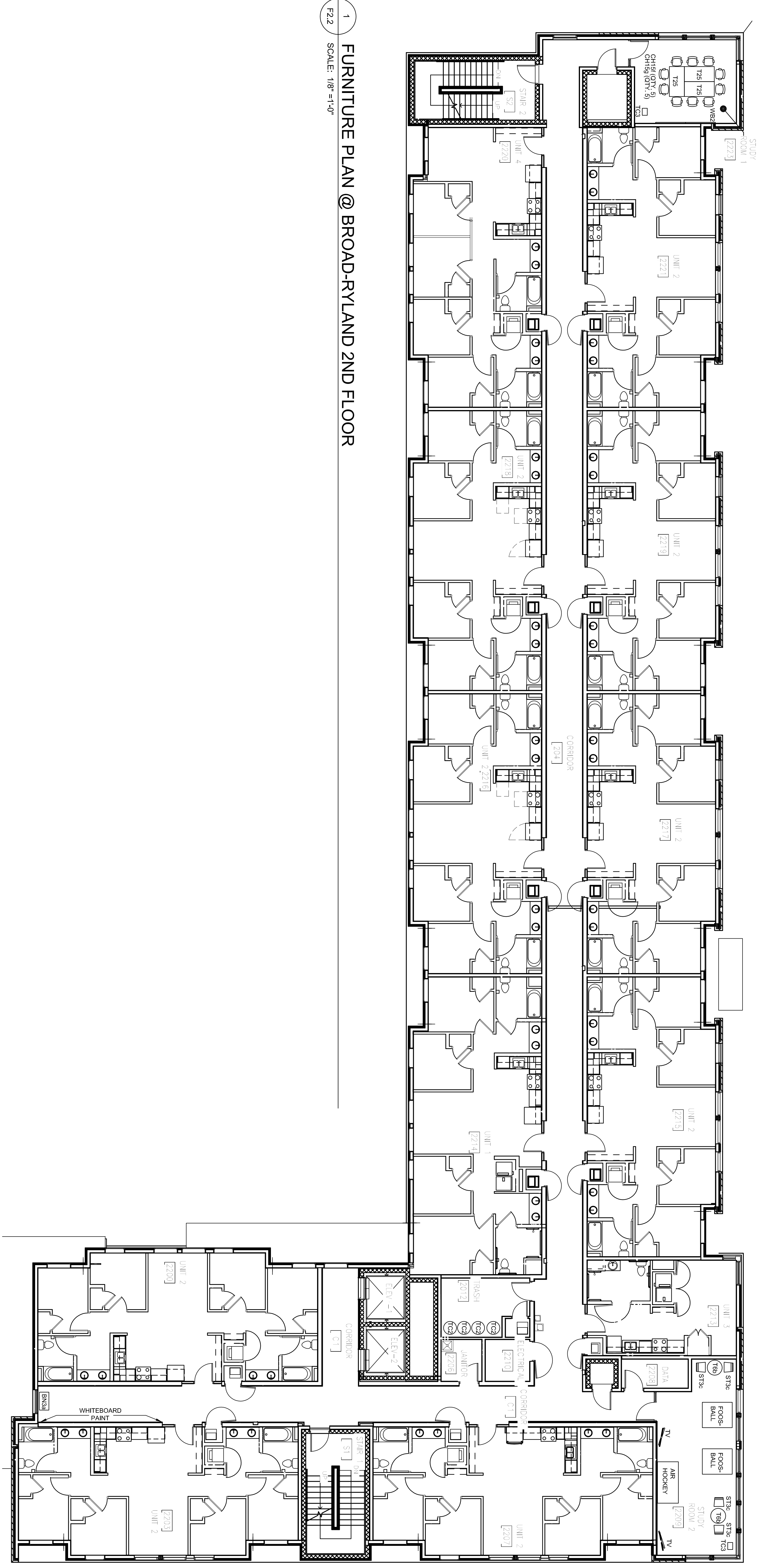
PROJECT NUMBER:
 1325

SCALE: 1/8" = 1'-0"
 DRAWN BY: SH
 CHECKED BY: LP
 DATE: 12.8.14

FURNITURE PLAN:
 BR 1ST FLOOR

SHEET NUMBER:
F2.1

| REVISIONS |
|-----------|
| |
| |
| |



1 FURNITURE PLAN @ BROAD-RYLAND 2ND FLOOR
 F2.2 SCALE: 1/8" = 1'-0"

PROJECT NUMBER:
1325

SCALE:
 1/8" = 1'-0"

DRAWN BY:
 SH

CHECKED BY:
 LP

DATE:
 12.8.14

DESIGN CONTACT:
 SHEILA HOOPMANN
 PYE INTERIORS
 434.971.1393

CLIENT CONTACT:
 MICHELE APPELGATE
 VCU

| REVISIONS |
|-----------|
| |
| |
| |
| |

VIRGINIA COMMONWEALTH UNIVERSITY
 GRACE-HARRISON / BROAD-RYLAND
 RICHMOND, VIRGINIA

PI PYE INTERIORS

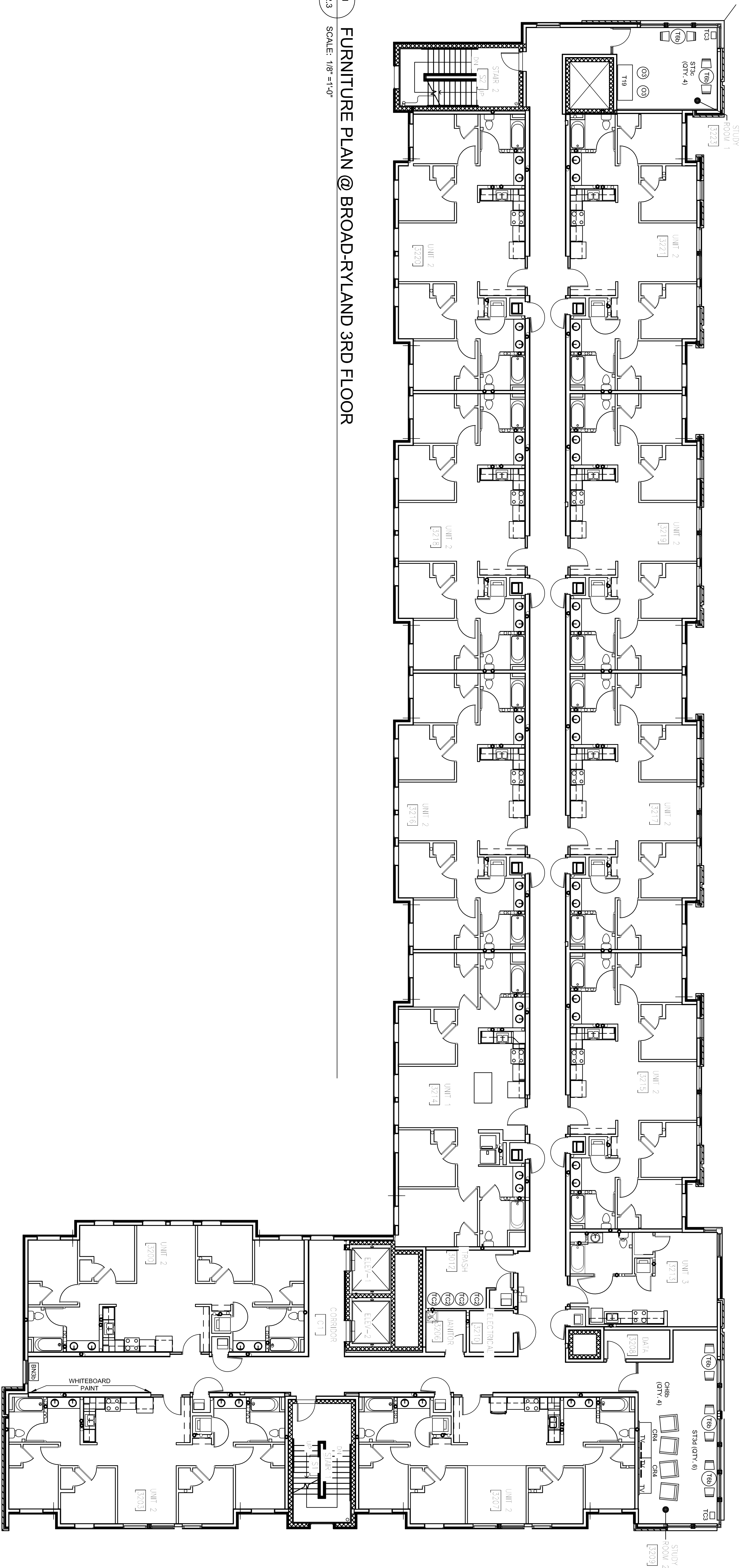
100 10th Street, NE
 Suite 201
 Charlottesville, VA 22902

+1 434 971 1393
 +1 434 971 1785 fax
 pyeinteriors.com

INSPIRING SPACES EDUCATION | HEALTHCARE | CORPORATE

SHEET NUMBER:
F2.2

FURNITURE PLAN:
 BR 2ND FLOOR



1 FURNITURE PLAN @ BROAD-RYLAND 3RD FLOOR
 F2.3 SCALE: 1/8" = 1'-0"

PI PYE INTERIORS
 100 10th Street, NE Suite 201
 Charlottesville, VA 22902
 +1 434 971 1393
 +1 434 971 1785 fax
 pyeinteriors.com
 INSPIRING SPACES EDUCATION | HEALTHCARE | CORPORATE

VIRGINIA COMMONWEALTH UNIVERSITY
 GRACE-HARRISON / BROAD-RYLAND
 RICHMOND, VIRGINIA

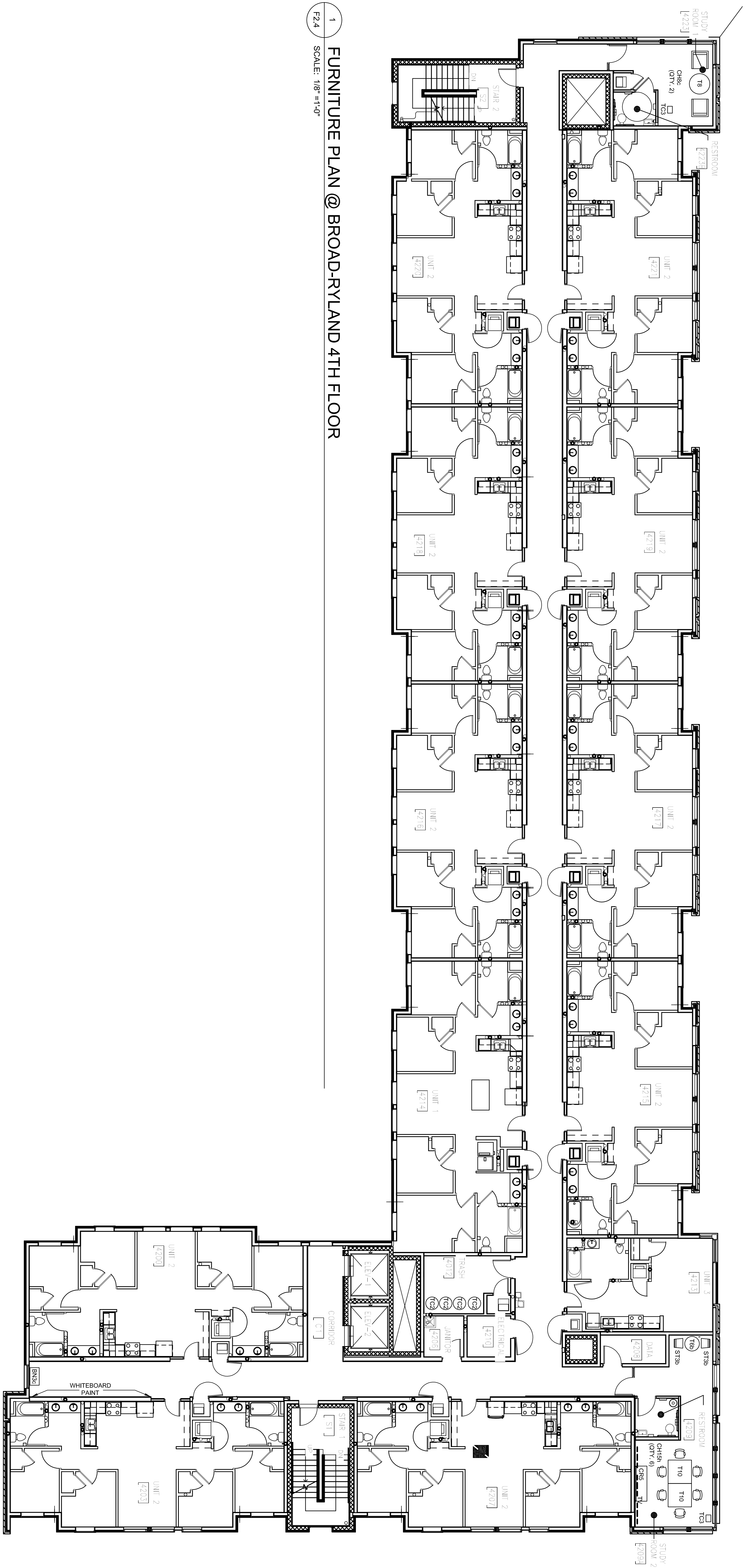
CLIENT CONTACT:
 MICHELE APPELEGATE
 VCU
 DESIGN CONTACT:
 SHEILA HOOPMANN
 PYE INTERIORS
 434.971.1393

PROJECT NUMBER:
 1325

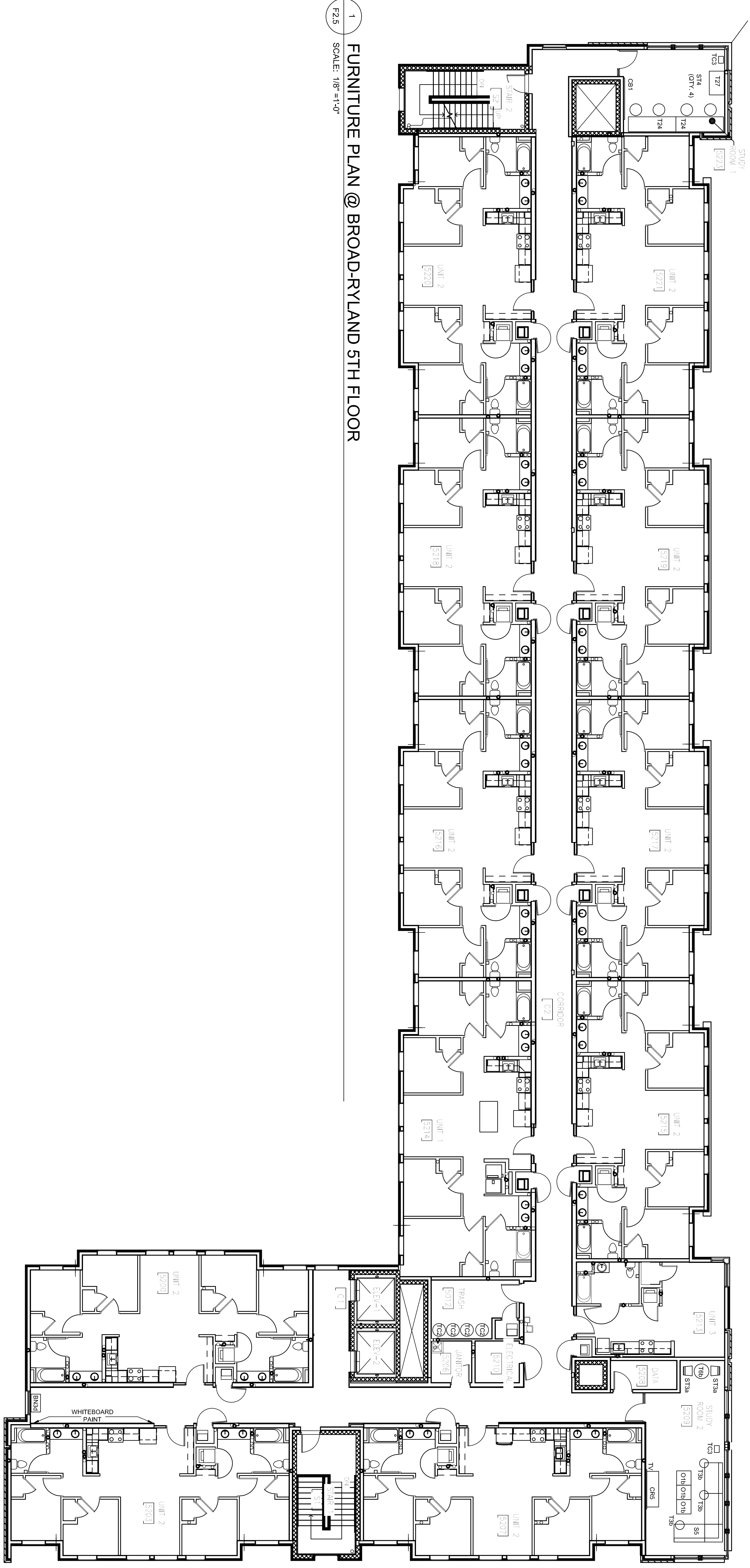
SCALE: 1/8" = 1'-0"
 DRAWN BY: SH
 CHECKED BY: LP
 DATE: 12.8.14

FURNITURE PLAN:
 BR 3RD FLOOR

SHEET NUMBER:
F2.3



1 FURNITURE PLAN @ BROAD-RYLAND 4TH FLOOR
 F2.4 SCALE: 1/8" = 1'-0"



1 FURNITURE PLAN @ BROAD-RYLAND 5TH FLOOR
 F2.5 SCALE: 1/8" = 1'-0"

PI PYE INTERIORS
 100 10th Street, NE Suite 201
 Charlottesville, VA 22902
 +1 434 971 1393
 +1 434 971 1785 fax
 pyeinteriors.com
 INSPIRING SPACES EDUCATION | HEALTHCARE | CORPORATE

VIRGINIA COMMONWEALTH UNIVERSITY
 GRACE-HARRISON / BROAD-RYLAND
 RICHMOND, VIRGINIA

CLIENT CONTACT:
 MICHELE APPELEGATE
 VCU
 DESIGN CONTACT:
 SHEILA HOOPMANN
 PYE INTERIORS
 434.971.1393

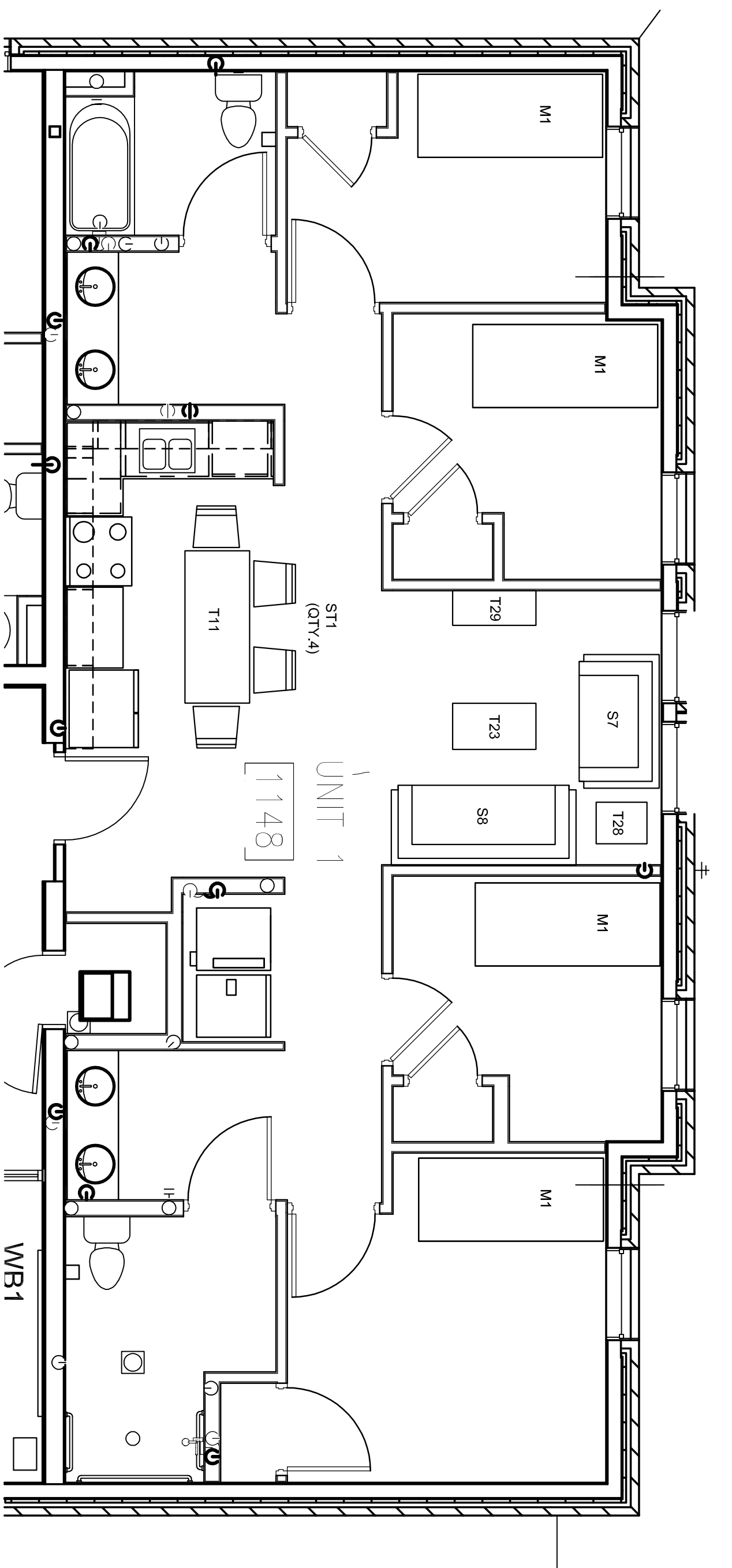
PROJECT NUMBER:
 1325

SCALE: 1/8" = 1'-0"
 DRAWN BY: SH
 CHECKED BY: LP
 DATE: 12.8.14

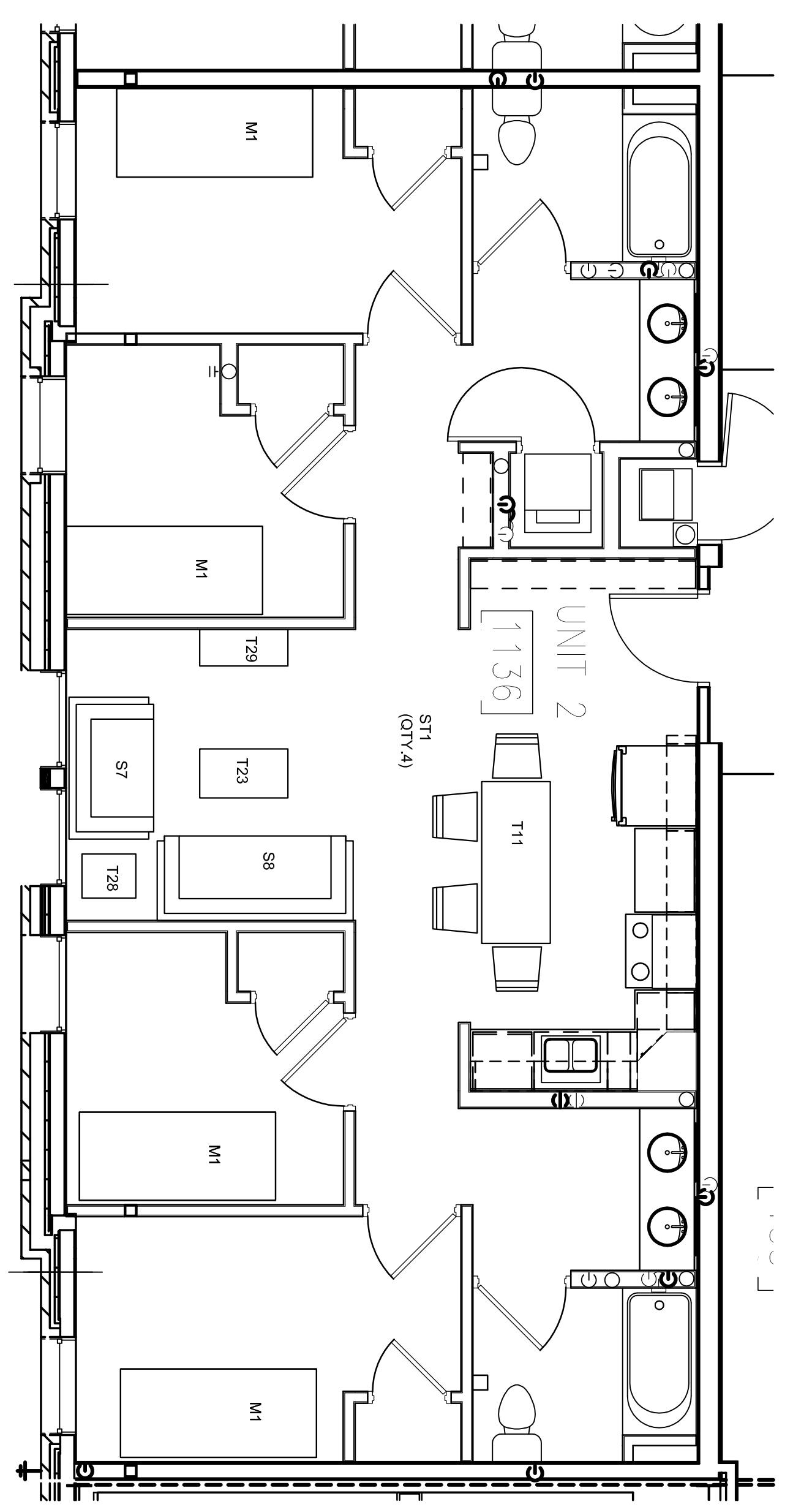
FURNITURE PLAN:
 BR 5TH FLOOR

SHEET NUMBER:
F2.5

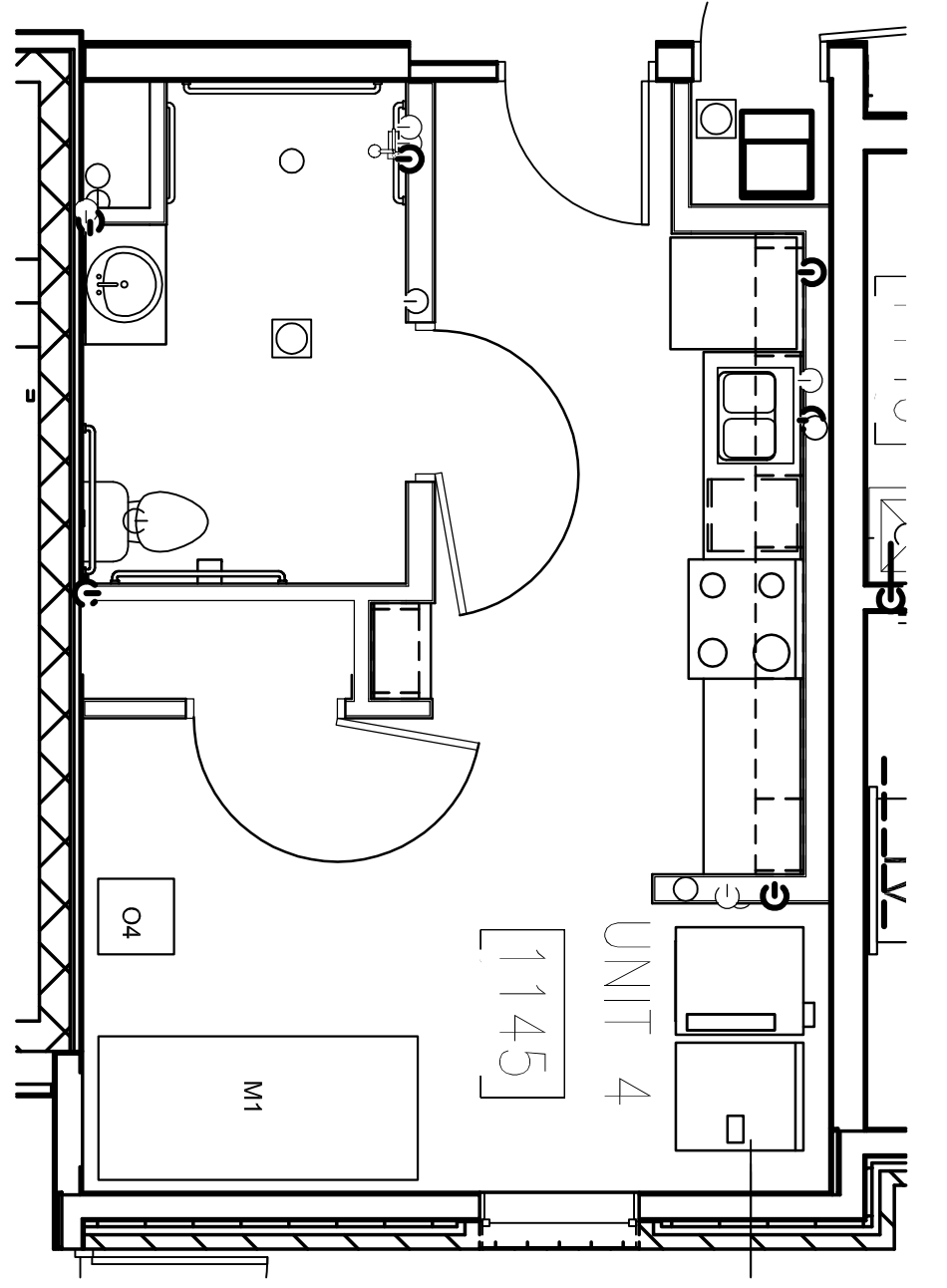
| REVISIONS |
|-----------|
| |
| |
| |



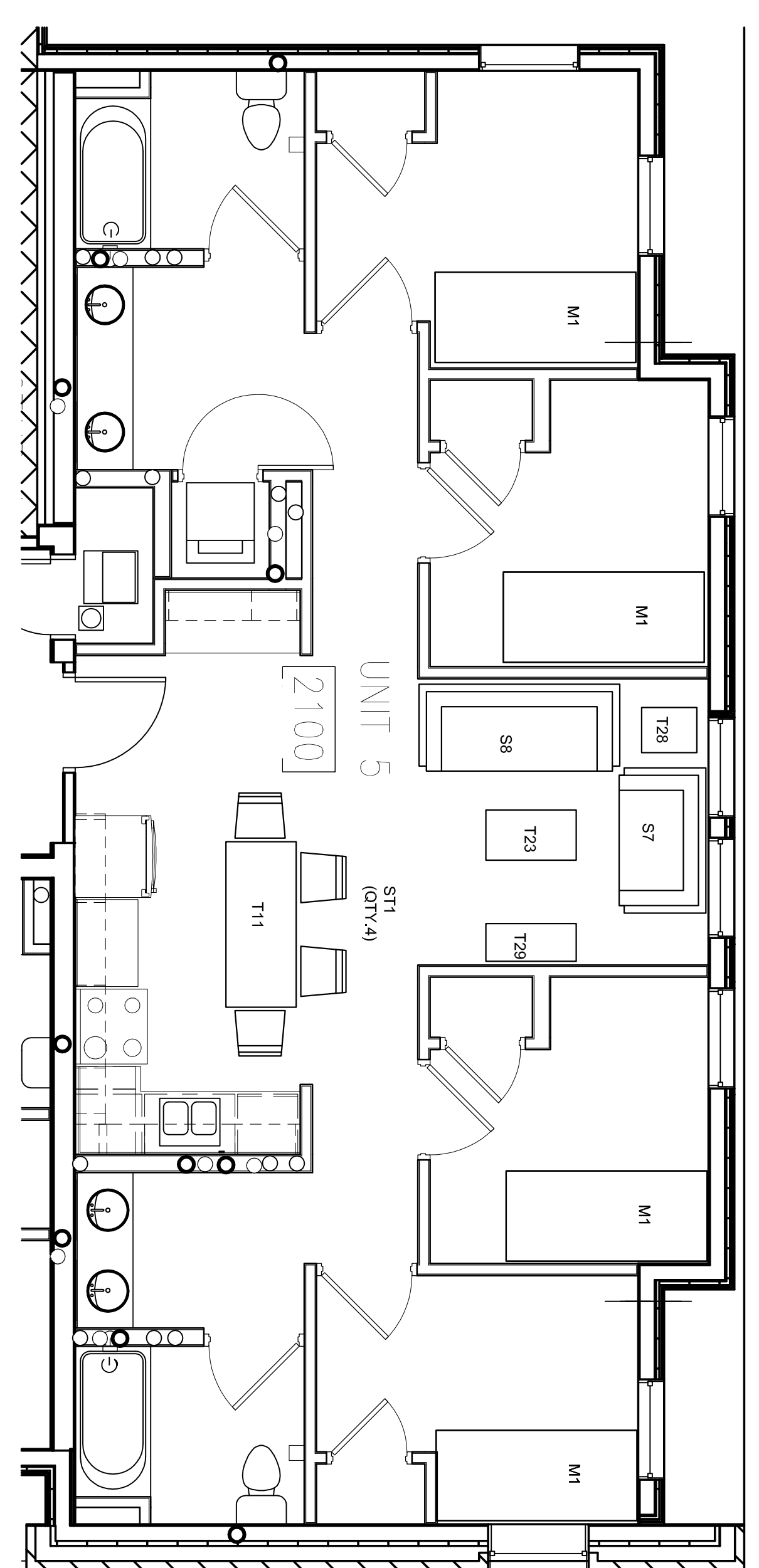
1 UNIT 1 - FOUR BEDROOM ADA (QTY. 6)
 F3.1 SCALE: 1/4"=1'-0"



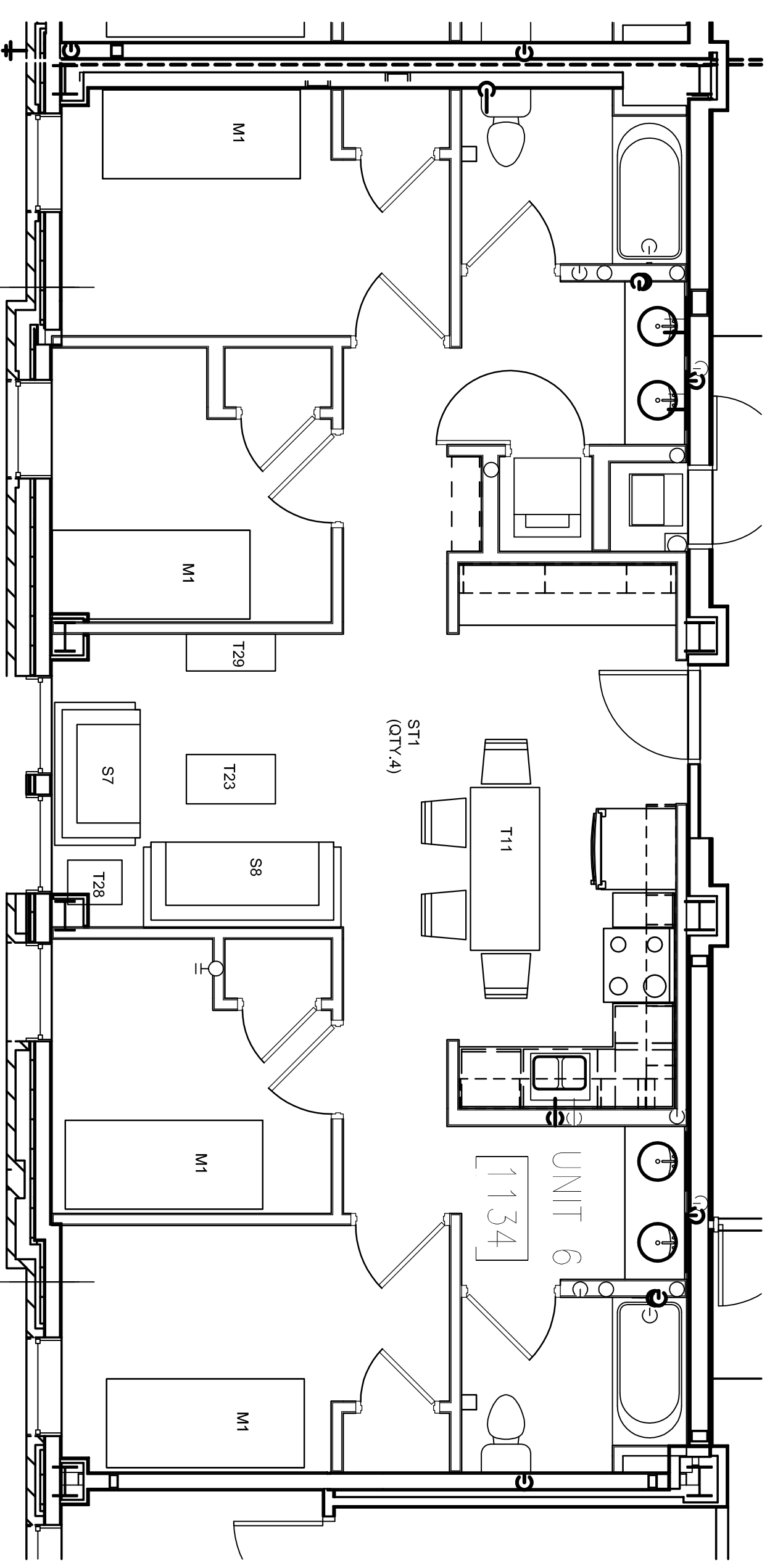
2 UNIT 2 - FOUR BEDROOM (QTY. 42)
 F3.1 SCALE: 1/4"=1'-0"



3 UNIT 4 - ONE BEDROOM APARTMENT (QTY. 5)
 F3.1 SCALE: 1/4"=1'-0"



4 UNIT 5 - FOUR BEDROOM (QTY. 4)
 F3.1 SCALE: 1/4"=1'-0"



5 UNIT 6 - FOUR BEDROOM (QTY. 1)
 F3.1 SCALE: 1/4"=1'-0"

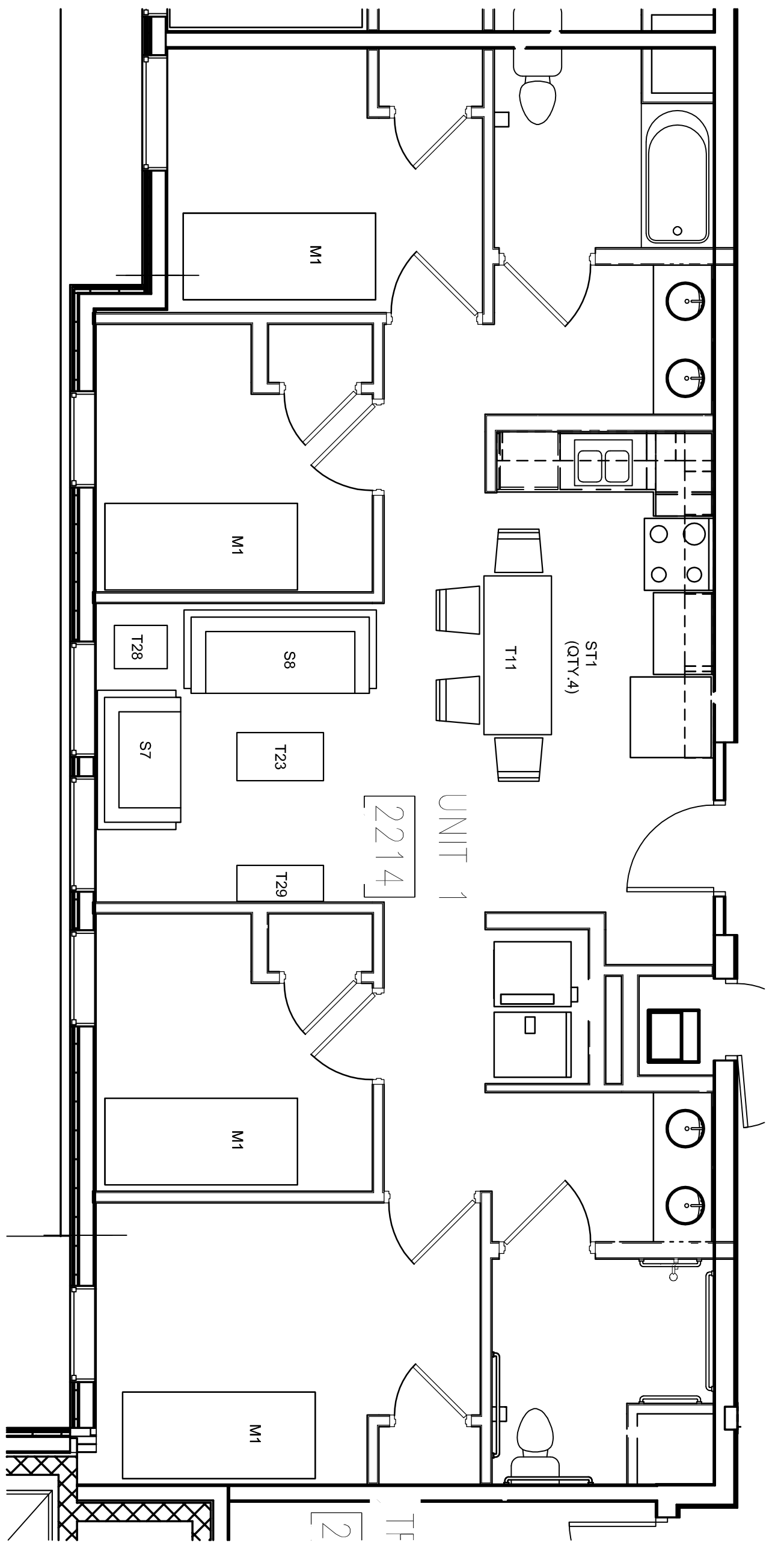
PI PYE INTERIORS
 100 10th Street, NE Suite 201
 Charlottesville, VA 22902
 +1 434 971 1393
 +1 434 971 1785 fax
 pyeinteriors.com
 INSPIRING SPACES EDUCATION | HEALTHCARE | CORPORATE

VIRGINIA COMMONWEALTH UNIVERSITY
 GRACE-HARRISON / BROAD-RYLAND
 RICHMOND, VIRGINIA

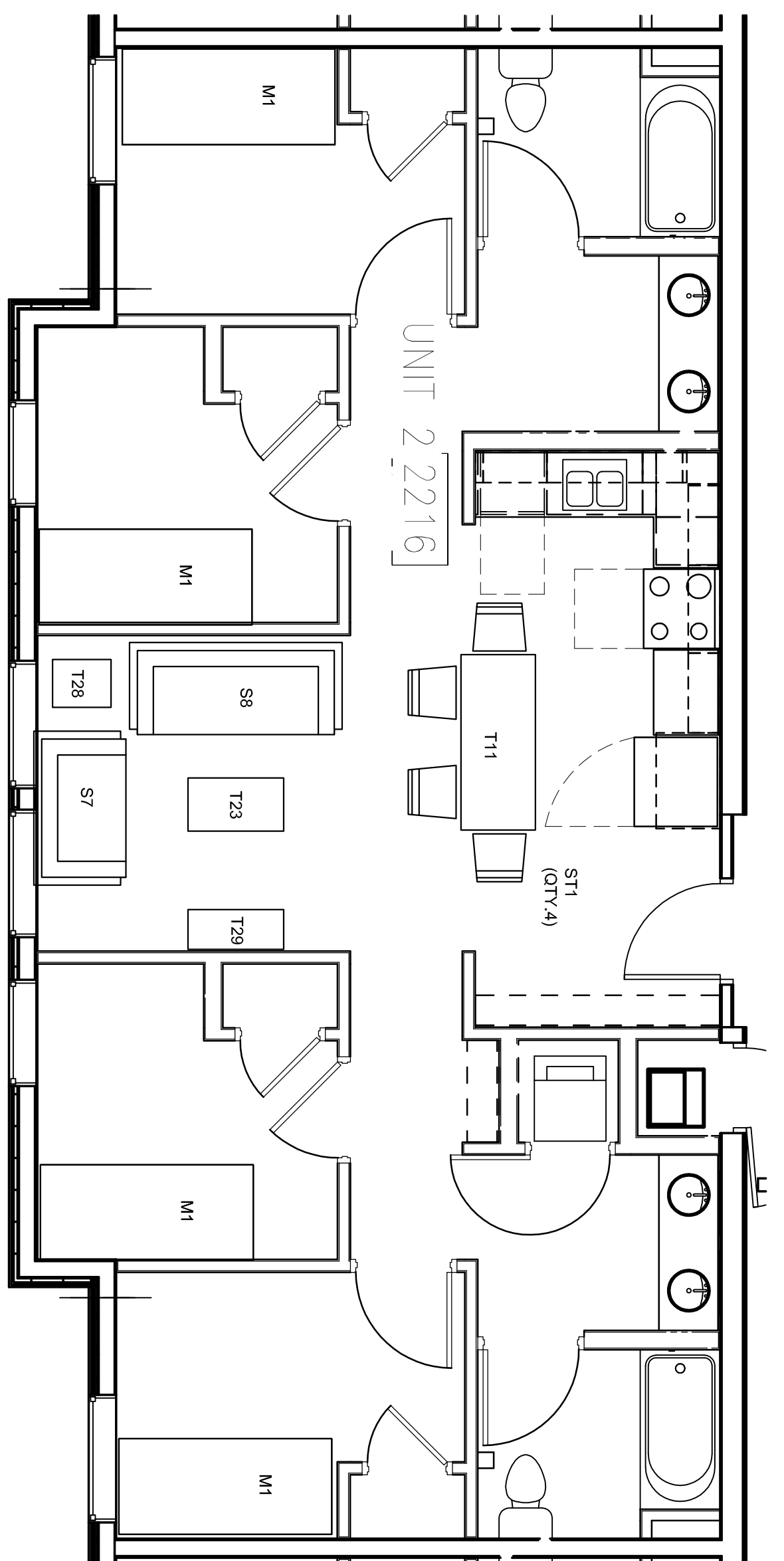
CLIENT CONTACT:
 MICHELE APPELEGATE
 VCU
 DESIGN CONTACT:
 SHEILA HOOPMANN
 PYE INTERIORS
 434.971.1393

PROJECT NUMBER:
 1325
 SCALE: 1/4"=1'-0"
 DRAWN BY: SH
 CHECKED BY: LP
 DATE: 12.15.14

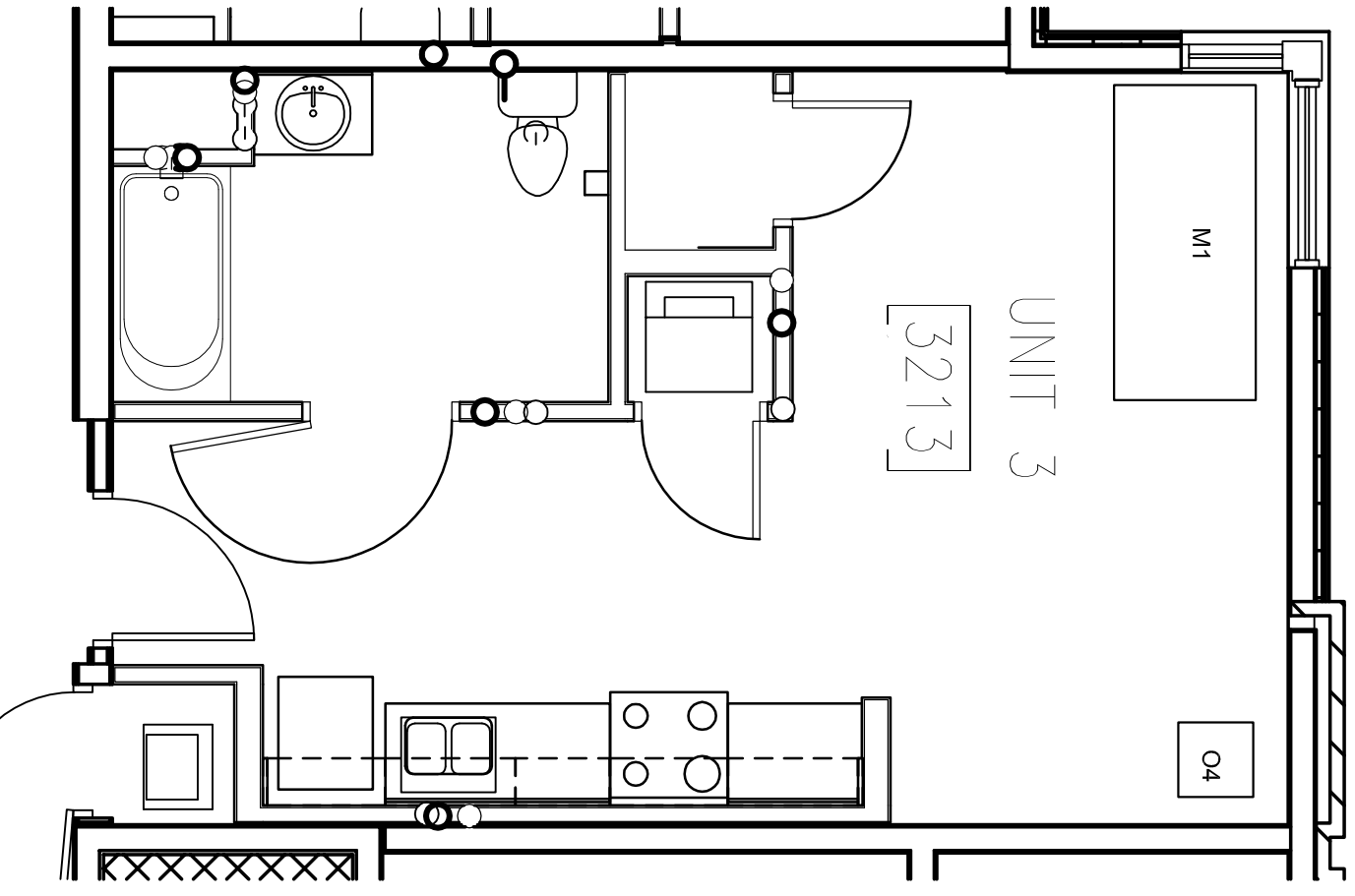
SHEET NUMBER:
F3.1
 BUILDING A:
 APARTMENT
 TYPICALS



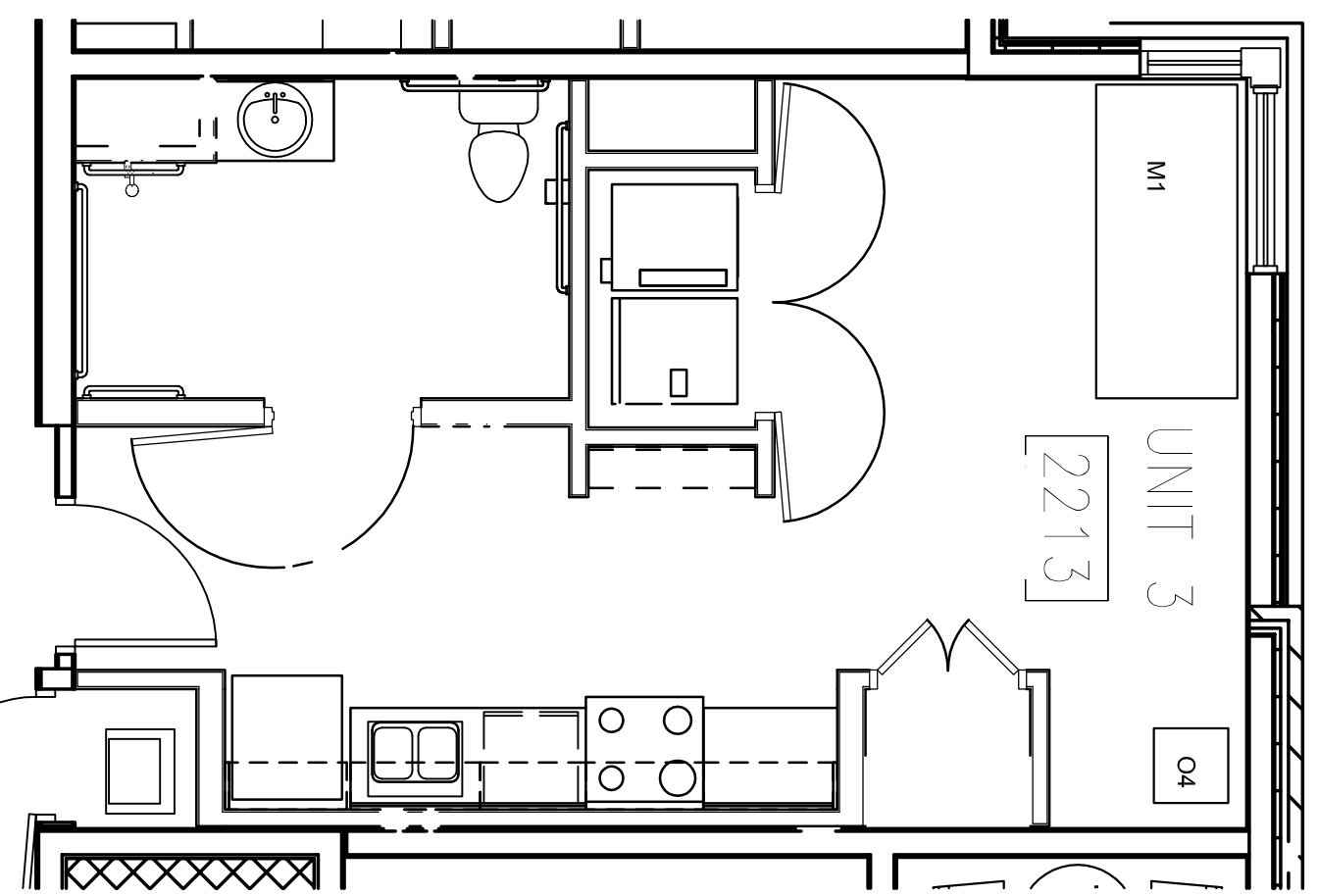
1 UNIT 1 - FOUR BEDROOM ADA (QTY. 4)
 F3.2 SCALE: 1/4"=1'-0"



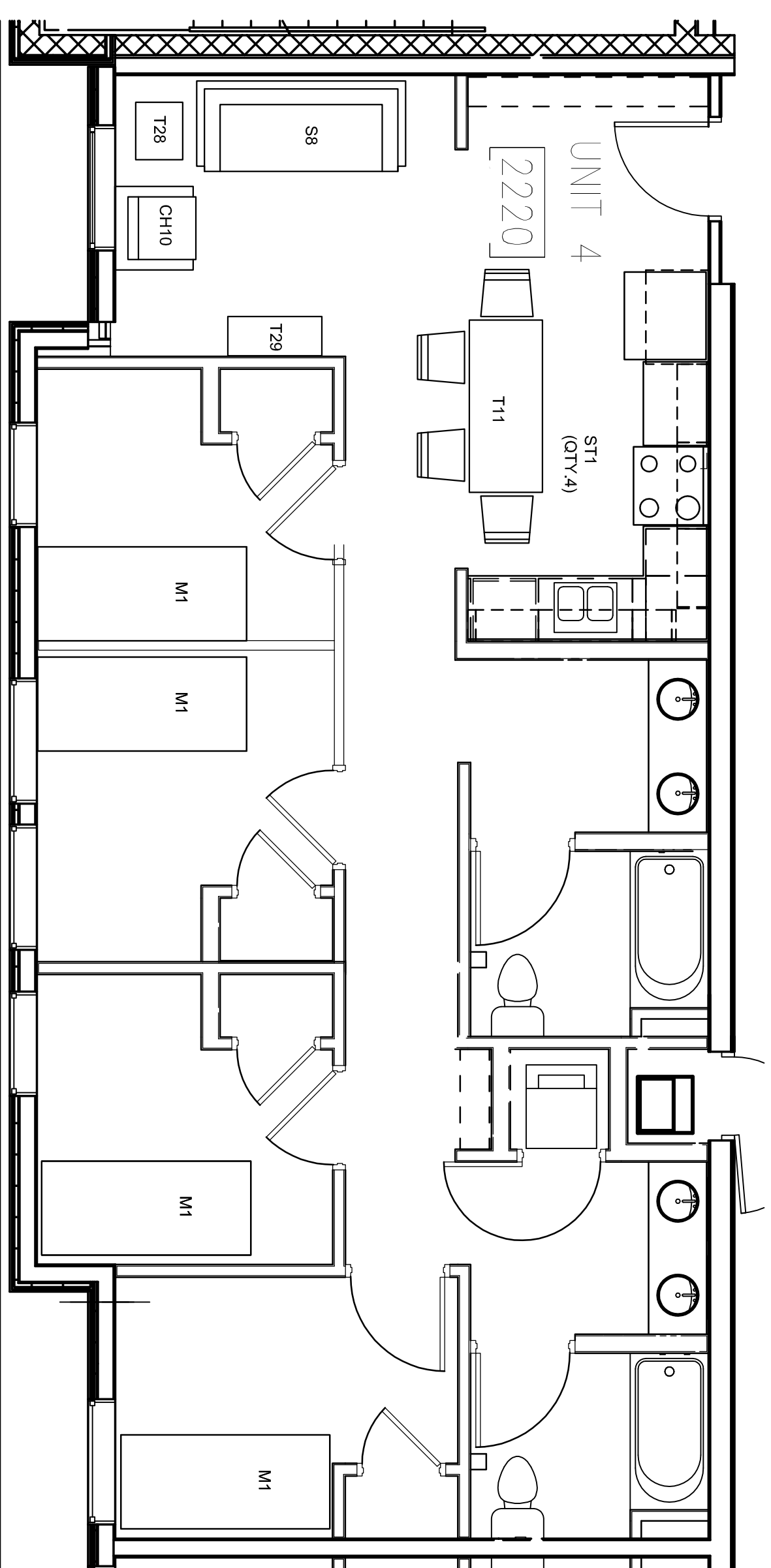
2 UNIT 2 - FOUR BEDROOM (QTY. 39)
 F3.2 SCALE: 1/4"=1'-0"



3 UNIT 3 - ONE BEDROOM (QTY. 3)
 F3.2 SCALE: 1/4"=1'-0"



4 UNIT 3 - ONE BEDROOM ADA (QTY. 1)
 F3.2 SCALE: 1/4"=1'-0"



5 UNIT 4 - FOUR BEDROOM (QTY. 1)
 F3.2 SCALE: 1/4"=1'-0"

| REVISIONS |
|-----------|
| |
| |
| |

CLIENT CONTACT:
 MICHELE APPELEGATE
 VCU

DESIGN CONTACT:
 SHEILA HOOPMANN
 PYE INTERIORS
 434.971.1393

PROJECT NUMBER:
 1325

SCALE: 1/4"=1'-0"
 DRAWN BY: SH
 CHECKED BY: LP
 DATE: 12.15.14

BUILDING B:
 APARTMENT
 TYPICALS

SHEET NUMBER: